



**NORTH**®



# PROTECTIVE FOOTWEAR

|  |              |
|--|--------------|
| <b>Processing</b> .....  | <b>4-10</b>  |
| NEOS Processing Overshoes  |              |
| Servus Neoprene III Footwear                                     |              |
| Neoprene III Advance   |              |
| Neoprene III with Neo-Grip Soles                                 |              |
| Neoprene III with Chevron Soles                                  |              |
| Neoprene Duraguard   |              |
| XtraTuf  |              |
| Servus Triple Density Technology Footwear                        |              |
| Servus Pro+  |              |
| Servus Pro   |              |
| Servus XTP   |              |
| <b>Metatarsal and Safety Footwear</b> .....                      | <b>11-13</b> |
| Ranger Rubber Safety Boots                                       |              |
| Ranger Flanker Metatarsal Safety Boots                           |              |
| <b>New</b> Ranger Full Metatarsal Guard Rubber Boots             |              |
| Ranger Flexible Metatarsal Guard Boots                           |              |
| Ranger Overshoes for Metatarsal Guard Leather Footwear           |              |
| <b>Overshoes</b> .....   | <b>14-21</b> |
| <b>New</b> NEOS Overshoes  |              |
| NEOS Insulated Overshoes   |              |
| Servus Rubber Overshoes  |              |
| Servus Supersized Rubber Overshoes                               |              |
| Servus Rubber Overshoes  |              |
| Servus SuperFit Overboots  |              |
| Servus LITE&TUF® Molded Overshoes                                |              |
| Servus LITE&TUF® Hi-Cut STRETCH-LITE™ Molded Overshoes           |              |
| <b>Slip-Resistant Overshoes</b> .....                            | <b>22-23</b> |
| Servus LITE 'N GRIT® Overshoes                                   |              |
| Servus SF™ GRIT Overboots  |              |
| NEOS STABILicers®  |              |
| Servus Studs®  |              |
| <b>Hip Boots &amp; Waders</b> .....                              | <b>24-25</b> |
| Ranger, Servus and Northerner Rubber Safety Hip Boots            |              |
| Ranger Rubber Boot Foot Chest Wader and Ranger, Servus Hip Boots |              |
| <b>General Industrial</b> .....                                  | <b>26-34</b> |
| The Original Muck Boot Company® Footwear                         |              |
| <b>New</b> Servus Injection-Molded Footwear                      |              |
| Servus Iron Duke® and CT™  |              |
| Servus, Ranger Steel Midsole Safety Boots                        |              |
| Ranger, Servus Safety Work Shoes                                 |              |
| Servus Heavy-Duty Knee Boots                                     |              |
| Ranger, Servus, Northerner Over-the-Foot Rubber Footwear         |              |
| Servus Dielectrics   |              |
| Servus, Northerner Insulated Over-the-Foot Rubber Footwear       |              |
| Servus, Ranger Insulated Leather Top Safety Pacs                 |              |
| <b>Special Operations Footwear</b> .....                         | <b>35</b>    |
| Servus Military Diver Boot                                       |              |
| North Chem Overboot  |              |
| North Disposable Bootie  |              |
| <b>New</b> North Hazmat Knee Boot                                |              |
| <b>Accessories</b> .....   | <b>36-37</b> |
| <b>Chemical Resistance Comparison Chart</b> .....                | <b>38</b>    |
| <b>Index</b> .....   | <b>39</b>    |

NOTE: Median boot heights and weights are provided as a guide. All proportioned heights and weights will necessarily vary by size.

**Slip-On:** Overshoes from 4-7" in height

**Hi:** Footwear from 14-20" in height

**Shoe:** Over-the-foot footwear from 4-7" in height

**Stormking:** Hip boots from 22-30" in height

**Mid:** Footwear from 10-12" in height

**Full Hip Boots:** Footwear from 31-36" in height



#### Steel-Toe Protection

SAFE-TOE steel toe construction provides roomy comfort and protection. Meets ASTM F2413-05. Meets Canadian standard CAN/CSA Z195-02.



#### Metatarsal Guard Protection

Anchored and floating metatarsal guards are built-in for extended protection. Meets ASTM F2413-05.



#### Steel Midsole Protection

Built-in SAFE-STEP flexible steel midsoles provide extra protection underfoot. Meets ASTM F2413-05.



#### Dielectric Protection

Special construction and testing provide specified boots for jobs with electrical hazards. Meets ASTM F2413-05.



#### Removable Cushion Insole Protection

Proper cushioning and arch support not only provide all-day comfort, but also help fight foot and leg fatigue – protecting against unnecessary stress and muscle pain.



#### Insulated Protection

A variety of insulating materials and constructions are used to keep feet closer to body temperature in extremes of heat and cold. Each suggested COMFORT ZONE offers a range of temperatures at which feet will remain comfortable with normal activity.



#### Servus® Triple Density Technology®

Servus TDT (Triple Density Technology) allows injection-molded footwear to have three distinct compounds merged in each boot.



#### Ozone Resistant

Constructed of ozone-resistant rubber for long-lasting wear and resistance to cracking.



Proudly Made in the U.S.A.



# These **industry leaders** are sure to **get customers excited.**

North Protective Footwear's impressive line of quality products includes two leading brands: **NEOS®** and **The Original Muck Boot Company®**.



## Today's Overshoes – The Elements Don't Stand a Chance

The overshoe is not a new concept. But like many great inventions, a better version was waiting to be discovered. NEOS (New England OverShoe Co., Inc.) was started in September 1994. The original focus of the company was to design, build and distribute a new approach to an old concept, the overshoe.

Using modern materials and construction techniques, NEOS reinvented the overshoe. NEOS Overshoes are lightweight, waterproof and durable. Designed to fit over most footwear, these overshoes provide tough protection between everyday comfortable shoes and the harsh elements of nature and hazardous chemicals.

NEOS' ground breaking new products are revolutionizing footwear in industrial settings; bacteria-resistant thermal polyurethane (TPU); lightweight designs for less worker fatigue; and unique outsoles designed for a variety of indoor/outdoor conditions. Where there's an overshoe need, NEOS has a solution to keep feet dry and safe.



**Get Comfortable.  
Get the Original.™**

## Comfort Redefined

It's no secret. The Original Muck Boot Company® brand is the most comfortable, waterproof footwear on the market. Once a pair is tried on, another loyal customer is born. The story began in 1999 when a need for a more comfortable boot for use in messy and tough conditions led to the design of The Original Muck Boot Company® brand footwear.

For the first time, these boots/shoes are being made available to industrial markets. Every boot in the line delivers the same 100% waterproof quality

and superior comfort that inspired the original footwear. The exceptional CR-foam construction is naturally lightweight, flexible and buoyant. The CR-foam bootie keeps the foot and lower leg warm and protected, while the Breathable Airmesh lining provides superior comfort and wicks away humidity and perspiration, keeping feet dry and comfortable.

Today, the brand defines a standard of comfort and quality that goes beyond the expectations of customers around the country. Quickly establishing a strong and loyal customer base, the brand has become one of the fastest growing lines in the waterproof footwear market.





## A Lightweight Alternative to Work Boots

### NEOS Processing Overshoes

Plant conditions can be demanding. NEOS Processing Overshoes provide a tough barrier between favorite shoes or sneakers and harsh conditions. They're designed to easily slip over personal shoes and so lightweight you hardly know you have them on.

These overshoes use specialized tread designs, closures and materials that help maintain hygienic production areas. They are able to withstand daily pressure washing for ongoing performance and can be sanitized inside and out.



*"These overshoes are the greatest thing I have found. They hold up longer than other boots, are easy to clean, comfortable to wear and keep my feet dry. Chemicals don't seem to hurt them. They are so quick and easy to put on that I am buying a pair for my own personal use."*

*Jeff Flora, Production Supervisor and Safety Coordinator  
Agrimark Cabot, Middlebury, Vermont*



#### IT12PT17 Blue

##### NEOS Processing Mid Overshoe

- 100% waterproof.
- Extremely lightweight.
- Heavy-duty .8 mm thermal polyurethane upper.
- Unique strap system provides snug fit.
- Snap closure for easy sanitation.
- Extra large gusset for easy on and off.
- Polyurethane outsole and open tread design.

Sizes: XS-XXXL



#### IT12ST17 Blue

##### NEOS Steel Toe Processing Mid Overshoe

- 100% waterproof.
- Extremely lightweight.
- Heavy-duty .8 mm thermal polyurethane upper.
- Unique strap system provides snug fit.
- Snap closure for easy sanitation.
- Extra large gusset for easy on and off.
- Polyurethane outsole and open tread design.
- Steel toe tested to ASTM F2413-05.

Sizes: XS-XXXL



#### IT12ST01 White

##### NEOS Steel Toe Processing Mid Overshoe

- 100% waterproof.
- Extremely lightweight.
- Heavy-duty .8 mm thermal polyurethane.
- Unique strap system provides snug fit.
- Snap closure for easy sanitation.
- Extra large gusset for easy on and off.
- Polyurethane outsole and open tread design.
- Steel toe tested to ASTM F2413-05.

Sizes: XS-XXXL



#### IT20PT17 Blue

##### NEOS Processing Hi Overshoe

- 100% waterproof.
- Extremely lightweight.
- Heavy-duty .8 mm thermal polyurethane upper.
- Unique strap system provides snug fit.
- Snap closure for easy sanitation.
- Extra large gusset for easy on and off.
- Polyurethane outsole and open tread design.

Sizes: XS-XXXL



#### IT20ST17 Blue

##### NEOS Steel Toe Processing Hi Overshoe

- 100% waterproof.
- Extremely lightweight.
- Heavy-duty .8 mm thermal polyurethane upper.
- Unique strap system provides snug fit.
- Snap closure for easy sanitation.
- Extra large gusset for easy on and off.
- Polyurethane outsole and open tread design.
- Steel toe tested to ASTM F2413-05.

Sizes: XS-XXXL



### Save money and be in compliance.

NEOS Overshoes help cut costs of overall footwear lowering the need to purchase multiple pairs of work footwear. Workers can be comfortable in their own shoes and still be protected.

#### Sizing Conversions

| SIZE                 | XS       | S        | M          | L          | XL         | XXL        | XXXL       |
|----------------------|----------|----------|------------|------------|------------|------------|------------|
| Fits Men's Sizes     | 3.5-5    | 5.5-7    | 7.5-9      | 9.5-11     | 11.5-13    | 13.5-15    | 15.5-17    |
| Fits Women's Sizes   | 5-6.5    | 7-8.5    | 9-10.5     | 11-12.5    |            |            |            |
| Fits Euro Sizes      | 35-37    | 38-40    | 41-42      | 43-45      | 46-48      | 49-50      | 51-53      |
| Insole dimensions(") | 10.3 X 4 | 11 X 4.3 | 11.8 X 4.4 | 12.4 X 4.5 | 12.8 X 4.6 | 13.5 X 4.8 | 14.5 X 5.5 |

We recommend going up a size when wearing boots. For the most accurate sizing, the shoe/boot sole should be measured.



## The Best Resistance to Fuels, Animal Blood/Fats, and Chemical Contamination and Deterioration

**SERVUS**

### Servus Neoprene III Footwear

This is the only triple-dipped neoprene footwear on the market. Made with the highest resistance to many deteriorating elements, they are ready for the toughest environments. Neoprene footwear is lighter in weight than ordinary rubber boots, but extremely durable and pliable. This combination makes neoprene footwear unmatched for comfort and protection.

Neoprene Shell Thickness Comparison Chart

|                  | Servus  | Competitor |
|------------------|---------|------------|
| Latex (Neoprene) | 0.41 mm | 0.23 mm    |

Provided by SATRA, an independent testing facility in United Kingdom.

- A** Servus neoprene footwear is triple-dipped to create a seamless coating of rubber that is highly resistant to many organic and inorganic chemicals. Vulcanizing further seals and strengthens this superior watertight material.
- B** Neoprene latex rubber is softer, lighter and far more pliable than ordinary rubber, making neoprene latex boots more comfortable and flexible.
- C** Hand-layered construction allows flex and strength at critical stress points.
- D** Servus fabric linings are soft and durable. Feet slide easily in and out. Moisture and condensation are wicked away.
- E** Extra thick bumpers for toe and heel help protect against knocks and wear.
- F** Heel counters reduce heel slippage and provide form-fitting comfort.
- G** **SAFE-TOE** steel toe construction meets ASTM F2413-05. Meets Canadian Standard CSA Z195-02 Grade 1. Meets electrical hazard requirements of ASTM F2413-05.

**DURAGUARD** metatarsal guards on Servus 22206 meet ASTM F2413-05. Built-in "floating" protection does not hinder comfort or mobility.

**G** Removable, washable Breathe-O-Prene® insoles provide shock absorption and moisture-wicking protection.

**H** Servus neoprene offers a choice of three outsole tread patterns. All work well to provide a superior grip on smooth, wet floors for better traction and stability.

### V-Wave Outsole

Sharp leading edges for increased slip resistance. Unique wave design squeezes water out for increased surface contact. Outsole side barrier perimeter for excellent stability.



### Chevron Self-Cleaning Sole & Heel

Flat, surface-to-surface tread pattern for extra slip resistance on slick surfaces.



### Neo-Grip, Slip-Resistant Sole & Heel

Extra-flexible pattern grips wet surfaces for better traction.



## The Comfort and Slip Resistance Workers Love

**SERVUS****Neoprene III Advance**

While competitors' boots are constructed with a layer of rubber under a thin layer of neoprene, Servus Neoprene footwear is triple dipped to provide a substantially thicker neoprene layer to shield against harsh chemicals.

The Servus Neoprene III Advance improves on this legendary design as the only boot to feature the V-WAVE™ outsole, an advanced traction design for increased slip resistance. This boot is designed for resistance to degradation from a wide variety of animal and vegetable fluids, as well as petroleum, petrochemical and agricultural substances.

**V-Wave Outsole**

V-Wave™ outsole with a "V"-style pattern, wide tread, channels with open side walls, and wide shank provides tremendous stability.

**V-WAVE**

Expandable gusset

**22235 Copper Tan/Black****Servus Insulated Neoprene III Advance Hi Steel Toe**

- V-Wave™ outsole for increased slip resistance on most surfaces.
- 100% waterproof, seamless construction.
- Graduated boot heights lessen irritation.
- Expandable gusset.
- Breathe-O-Prene insoles.
- Polymeric foam insulation.
- Steel toe meets ASTM F2413-05.
- Meets electrical hazard requirements of ASTM F2413-05.

Men's Whole Sizes: 3-15

**22234 Copper Tan****Servus Neoprene III Advance Hi Steel Toe**

- V-Wave™ outsole for increased slip resistance on most surfaces.
- 100% waterproof, seamless construction.
- Graduated boot heights lessen irritation.
- Expandable gusset.
- Breathe-O-Prene insoles.
- Steel toe meets ASTM F2413-05.
- Meets electrical hazard requirements of ASTM F2413-05.

Men's Whole Sizes: 3-15

**Neoprene III with Neo-Grip Soles**

Servus Neoprene III footwear is extremely durable, lightweight, and remains the most comfortably durable, supple boots made. Breathe-O-Prene® insoles provide shock absorption and pull away moisture. Formulated with a neoprene latex that resists a broad variety of substances, this footwear is constructed with the Neo-Grip™ sole and heel. Its suction-gripping neoprene tread patterns "lock" onto slick floors to help reduce slips and falls.

**22103 Copper Tan****Servus Neoprene Safety Shoe**

- 100% waterproof.
- Seamless construction is soft and pliable.
- Breathe-O-Prene insoles provide shock absorption and moisture-wicking comfort.
- Tough, comfortable fabric lining.
- NEO-Grip™ sole and heel.
- Steel toe meets ASTM F2413-05.
- Meets electrical hazard requirements of ASTM F2413-05.

Men's Whole Sizes: 6-13

**22148 Copper Tan****Servus Neoprene Mid Pac**

- 100% waterproof.
- Seamless construction is soft and pliable.
- Breathe-O-Prene insoles provide shock absorption and pull away moisture.
- Tough, comfortable fabric lining.
- NEO-Grip™ sole and heel.
- Steel toe meets ASTM F2413-05.
- Meets electrical hazard requirements of ASTM F2413-05.

Men's Whole Sizes: 6-13

**22158 Copper Tan (not shown)****Servus Neoprene Mid Pac**

- Same as 22148 without a steel toe.
- Tested to electrical hazard requirements of ASTM F2413-05.

Men's Whole Sizes: 6-13

**22248 Copper Tan (not shown)****Servus Neoprene Hi Pac**

- Same as 22148 except with added height.

Men's Whole Sizes: 6-13





## Lasting Comfort and Protection on the Job

**SERVUS**

### Neoprene III with Chevron Soles

The Chevron self-cleaning sole and heel offers a flat, surface-to-surface tread pattern for increased slip resistance on slick surfaces and requires virtually no clean up. Both steel toe and plain toe constructions provide roomy comfort and protection.

- 100% waterproof.
- Seamless, dipped construction makes it soft and pliable in harsh conditions.
- Breathe-O-Prene® insoles provide shock absorption and pull moisture away from the feet.
- Tough, comfortable fabric lining.

### Footwear that's versatile in a variety of industries:

- |                             |                             |                          |
|-----------------------------|-----------------------------|--------------------------|
| • Slaughterhouses           | • Agri-chemical industries  | • Fishing industries     |
| • Specialty meat processing | • Oil drilling and refining | • Breweries and bottling |
| • Poultry processing        | • Dairy and food processing | • Farming                |
| • Petrochemical plants      |                             | • Waste disposal         |

#### 22114 Copper Tan

##### Servus Neoprene Safety Mid Pac

- Chevron sole and heel.
- Steel toe meets ASTM F2413-05.
- Meets electrical hazard requirements of ASTM F2413-05.

Men's Whole Sizes: 3-15



#### 22115 (not shown)

##### Servus Neoprene Safety Mid Pac

- Same as 22114 without a steel toe.
- Tested to electrical hazard requirements of ASTM F2413-05.

Men's Whole Sizes: 4-14



#### 22214 Copper Tan

##### Servus Neoprene Safety Hi Pac

- Chevron sole and heel.
- Steel toe meets ASTM F2413-05.
- Meets electrical hazard requirements of ASTM F2413-05.

Men's Whole Sizes: 3-15



#### 22215 (not shown)

##### Servus Neoprene Safety Hi Pac

- Same as 22214 without a steel toe.
- Tested to electrical hazard requirements of ASTM F2413-05.

Men's Whole Sizes: 3-14



### Neoprene Duraguard

For lasting performance, rely on the Servus Duraguard Metatarsal Shield to provide the extra measure of upper foot protection. Neoprene Duraguard provides flexible protection when bending or kneeling, and cushions and absorbs impact when it matters. That's confident protection.

- 100% waterproof.
- Seamless, dipped construction makes it soft and pliable in harsh conditions.
- Breathe-O-Prene insoles provide shock absorption and pull moisture away from the feet.
- Tough, comfortable fabric lining.

#### 22206 Copper Tan

##### Servus Neoprene Duraguard Safety Hi Pac

- Duraguard floating metatarsal guard meets ASTM F2413-05.
- Chevron sole and heel.
- Steel toe meets ASTM F2413-05.
- Meets electrical hazard requirements of ASTM F2413-05.

Men's Whole Sizes: 5-15





**XTRATUF®****No Boots Perform Better in Cold, Wet Conditions****XTRATUF® Insulated Neoprene Pacs**

Take advantage of XTRATUF neoprene protection in cold weather and refrigerated work environments. The shells are triple dipped for extra tough, watertight protection against acids, corrosives and contaminants. These pacs have built-in foam insulation and a felt midsole to keep feet warm, dry and comfortable in low temperatures.

**22274G Copper Tan****XTRATUF Insulated Neoprene Hi Pac**

- Built-in foam insulation.
- Chevron sole and heel.
- Tested to electrical hazard requirements of ASTM F2413-05.
- Slip-resistant Chevron outsoles for sure-gripping traction.
- Lightweight, shock absorption comfort with cork-cushioned insoles.
- Easy on and off with smooth, durable fabric linings.
- Immersed in a special sealant for an XTRATUF "total protection shield."
- Seamless 100% waterproof construction.

**Men's Whole Sizes: 5-14****22273G Copper Tan****XTRATUF Insulated Neoprene Safety Hi Pac**

- Built-in foam insulation.
- Chevron sole and heel.
- Steel toe meets ASTM F2413-05.
- Meets electrical hazard requirements of ASTM F2413-05.
- Slip-resistant Chevron outsoles for sure-gripping traction.
- Lightweight, shock absorption comfort with cork-cushioned insoles.
- Easy on and off with smooth, durable fabric linings.
- Immersed in a special sealant for an XTRATUF "total protection shield."
- Seamless 100% waterproof construction.

**Men's Whole Sizes: 3-15**

*"I've been wearing the same pair for 10 years. They work great doing field work...thank you for making such quality boots."*

Amy Rodman  
Fairbanks, Alaska







## Most Comfortable PVC Knee Boots Available

**SERVUS****Servus® Triple Density Technology®**

Servus TDT (Triple Density Technology) allows injection-molded footwear to have three distinct compounds merged in each boot.

Now compounds for wear and traction can be balanced with compounds for specific chemical resistance to create boots that are tougher and more reliable in harsh environments.

- A** TDT™ compounding formulas provide resistance to a variety of chemicals.
- B** Leather-grained, molded uppers offer seamless, waterproof protection.
- C** Contour molding fits comfortably without heel slippage.
- D** Boot heights are proportioned to boot size.
- E** Extra-thick toe and heel guards protect against knocks and wear.
- F** Color-coded midsole stripes: Yellow for safety toe styles and red for plain toe styles.
- G** Higher, wider kick-off lugs.
- H** Grooved, angled heel stop grips floor when pushing off at heel.
- I** Extended steel shanks bridge the instep and are arched and ribbed for strength and support. They provide more comfort and safety on ladder rungs.
-  **SAFE-TOE** steel toe construction in yellow trim styles meet ASTM F2413-05.
-  **FOOT FORM™** contour cushion insoles are lightweight insoles and contour formed to the foot with lift at the arch and support at the heel. Removable, washable and replaceable.



- J** **K** TDT™ compounding allows the outsoles to have two formulas: a tough, abrasion-resistant compound for the outsole perimeter (J) and a softer, slip-resistant formula for the centersole treads (K).
- K** Slip-resistant centersole treads are grooved and angled for maximum traction. The Servus PRO™ compound is rated Class 5 (best rating) using the ASTM F-489 test method.
- J** The perimeter outsoles are a high molecular weight compound created for abrasion resistance as well as oil, chemical, and blood and fats deterioration resistance. Self-cleaning triangular outsole cleats.

**Servus PRO+™ Innovative Footwear that Stacks Up**

Competitors' boots can't add up to all the advantages the Servus PRO+™ knee boot offers. Built with TDT™ innovations and quality standards, this boot also features an advanced sole and heel tread, prohibiting hydroplaning and maximizing traction.



 **75105** Gray/Yellow/Beige

**Servus PRO+™ Safety Hi Boot**

- PRO+™ self-cleaning outsole.
- FOOT FORM™ contour comfort.
- Steel toe meets ASTM F2413-05.

**Men's Whole Sizes: 5-15**



Slip-resistant centersole treads are grooved and angled for maximum traction.

Advanced outsole pattern squeezes fluids to outer channels expelling them from underfoot, prohibiting hydroplaning and providing better contact between the outsole and floor.



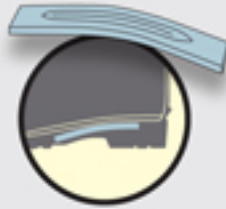
Dual outsole design and dual compounding contributes to enhanced slip resistance in wet and oily/wet environments.

## Heavyweight Protection with Lightweight Comfort

**SERVUS**

With all Servus TDT™ 3-stage molded footwear, the details make the difference...

Servus extended steel shanks are thicker, longer and wider as well as curved and ribbed for strength. They fully bridge the heel and instep for effective support.



Ordinary steel shanks are short, flat, weak and placed too far in the heel to be effective.



### Servus PRO®

Expertly engineered for durability and comfort, Servus PRO™ is specially formulated to withstand deterioration. Developed with TDT, Servus PRO (PROcessing) footwear withstands the organic chemical deterioration common in meat processing and petrochemical industries.

- Seamless, waterproof comfort with 3-stage molded construction.
- Outsole compounds formulated for long wear and slip resistance.
- Removable and washable ergonomic insoles.
- Extended ribbed steel shank for support.
- Yellow midsole trimline indicates steel toe.
- Graduated heights decrease calf chaffing.



**75101** Gray/Yellow/Black

#### Servus PRO Safety Hi Boot

- TDT™ self-cleaning outsole.
- FOOT FORM™ contour comfort.
- Steel toe meets ASTM F2413-05.

Men's Whole Sizes: 5-15



**75102** Gray/Red/Black

#### Servus PRO Hi Boot

- Black TDT™ self-cleaning outsole.
- FOOT FORM™ contour comfort.

Men's Whole Sizes: 5-15



### Servus XTP® Chemical-Resistant Footwear

Working in harsh environments with slick or oily surfaces requires additional safety measures. Servus XTP "Xtra Traction Performance" footwear is created with TDT to withstand the organic chemical deterioration common in poultry and fish processing, as well as oil rigs, mining and general industrial applications. The flat sole design made of a high traction compound, along with a self-cleaning outsole tread, provides the ultimate in slip resistance.

- Seamless, waterproof comfort with 3-stage molded construction.
- Outsole compounds formulated for excellent traction and long wear.
- Extended ribbed steel shank for support.
- The yellow midsole trimline indicates steel toe.
- Graduated heights decrease calf chaffing.



**75109** Black/Yellow/Gray

#### Servus XTP Safety Hi Boot

- TDT™ self-cleaning outsole.
- FOOT FORM™ contour comfort.
- Steel toe meets ASTM F2413-05.

Men's Whole Sizes: 3-15



**75108** Black/Red/Gray

#### Servus XTP Hi Boot

- Gray TDT™ self-cleaning outsole.
- FOOT FORM™ contour comfort.

Men's Whole Sizes: 3-15





## Any Tougher and They'd Be Bulletproof

Only Ranger shoes and boots are a match for the hazardous, heavy-duty jobs. Each is packed with the materials and construction features needed to provide job-designed comfort and protection for the long haul.



Watch for these key features to get the best possible protection in rugged work environments:

- A** Ranger rubber is industrial weight for strength, durability and compounded for ozone resistance.
  - B** Combines several layers of rubber and safety components for comfort and protection. Construction is vulcanized to assure boot is 100% waterproof.
  - C** Additional layers of high-abrasion reinforcement rubber when the job demands boots with maximum strength and stability.
  - D** Fabric linings are soft and durable.
  - E** Built-in polyfoam insulation keeps feet closer to body temperature in extreme heat and cold.
  - F** Extra-thick, knurled overlays protect toe and heel against knocks and wear.
  - G** Ridged, ultra-composite shanks fully bridge the instep to provide added strength, support and protection for the arch.
- SAFE-TOE steel toe construction meets ASTM F2413-05. Meets Canadian Standard CSA Z195-02 Grade 1.
  - SAFE-STEP steel midsoles meet ASTM F2413-05. Thin enough to flex; strong enough to protect. Meets Canadian Standard CSA Z195 Grade 1.
  - Ranger metatarsal guard boots meet ASTM F2413-05.
  - Removable FOOT FORM contour cushion insoles provide proper cushioning and arch support for all-day comfort while fighting foot and leg fatigue – protecting against unnecessary stress and muscle pain. Removable, washable, and replaceable.
  - G** A selection of outsole tread patterns designed to provide traction and stability in a variety of indoor and outdoor working conditions.

**RANGER**

Ranger is a leader in safety footwear for the mining industry.

## Rubber Safety Boots

The rugged durability of Ranger's rubber safety boots offers valuable protection in all kinds of industrial settings. The steel toe construction and hard-wearing tread features are ideal for oil rig or mining applications.



**21674** Brown

## Ranger Safety Hi Pac

- Heavy Trac Tread™ sole and heel.
- Flexible, hand-layered construction.
- Tough, comfortable fabric linings for easy on and off.
- Cushion insoles reduce fatigue.
- Ultra-composite shanks reinforce construction and support the arch.
- Steel toe meets ASTM F2413-05.

Men's Whole Sizes: 6-14



**6145** Red

## Ranger Insulated Safety Mid Pac

- Full polymeric foam insulation.
- Heavy Trac Tread™ sole and heel.
- Flexible, hand-layered construction.
- Tough, comfortable fabric linings.
- Cushion insoles reduce fatigue.
- Ultra-composite shanks reinforce construction and support the arch.
- Steel toe meets ASTM F2413-05.

Men's Whole Sizes: 6-14



**6147** Red

## Ranger Insulated Fleece Safety Mid Pac

- Full fleece insulation for additional warmth.
- Removable felt insole for warmth underfoot.
- Heavy Trac Tread™ sole and heel.
- TUFF-SCUFF toe abrasion layer.
- Flexible, hand-layered construction.
- Ultra-composite shanks reinforce construction and support the arch.
- Steel toe meets ASTM F2413-05.

Men's Whole Sizes: 6-13



## Metatarsal Guard Boots Provide Aggressive Defense



### Flexible Metatarsal Guard Boots

Built-in Flex-Gard metatarsal guard floats on top of the foot for increased flexible protection. The weatherproof rubber construction and steel midsoles are an excellent defense against hazards.



**NEW** 9810 Red

#### Ranger Insulated 5-Eyelet Flex-Gard metatarsal safety boot

- Steel toe, metatarsal guard and steel midsole meet ASTM F2413-05.
- Wool fleece insulation.
- Hand layered, ozone resistant rubber construction.
- Composite shank.
- 100% waterproof.

Men's Whole Sizes: 6-15



2169 Olive

#### Ranger Flex-Gard Safety Hi Pac

- Heavy Trac Tread™ sole and heel.
- Knurled, high-abrasion metatarsal and heel overlays for longer service.
- SAFE-STEP puncture-resistant steel midsoles for maximum protection.
- Specialized compound prevents ozone deterioration.
- High-abrasion rubber outsoles for durability and longer wear.
- FOOT FORM contour cushion insoles.
- Ultra-composite shanks reinforce construction and support the arch.
- Steel toe, metatarsal guard and steel midsole meet ASTM F2413-05.

Men's Whole Sizes: 5-14



**NEW** 3950 Olive

#### Ranger Flex-Gard Safety Hi Pac

- Flexible metatarsal guard.
- Heavy Trac Tread™ sole and heel.
- SAFE-STEP puncture-resistant steel midsoles for maximum protection under foot.
- Specialized compound prevents ozone deterioration.
- FOOT FORM contour cushion insoles.
- Ultra-composite shanks reinforce construction and support the arch.
- Steel toe, metatarsal guard and steel midsole meet ASTM F2413-05.

Men's Whole Sizes: 6-14



2149 Olive

#### Ranger Flex-Gard Safety Mid Pac

- Heavy Trac Tread™ sole and heel.
- Knurled, high-abrasion metatarsal and heel overlays for longer service.
- SAFE-STEP puncture-resistant steel midsoles for maximum protection.
- Specialized compound prevents ozone deterioration.
- FOOT FORM contour cushion insoles.
- Ultra-composite shanks reinforce construction and support the arch.
- Steel toe, metatarsal guard and steel midsole meet ASTM F2413-05.

Men's Whole Sizes: 5-13



2165 Red

#### Ranger Flex-Gard Safety Mid Pac

- Heavy Trac Tread™ sole and heel.
- Full polymeric foam insulation.
- Knurled, high-abrasion metatarsal and heel overlays.
- SAFE-STEP puncture-resistant steel midsoles for maximum protection.
- Ultra-composite shanks reinforce construction and support the arch.
- Steel toe, metatarsal guard and steel midsole meet ASTM F2413-05.

Men's Whole Sizes: 6-13





## Essential Protection in Unforgiving Environments



### Flanker™

The Flanker is a 100% waterproof boot with built-in Flex-Gard metatarsal guards that float on top of the foot for flexible protection. The design in black hand-laid rubber with a reflective stripe across the side is flexible and wear resistant.

- SAFE-STEP puncture-resistant steel midsoles provide maximum protection.
- FOOT FORM contour cushion insoles are removable and washable.
- Knurled, high-abrasion metatarsal and heel overlays provide longer wear.



#### 2222 Black

##### Ranger Flanker 12 Metatarsal Safety Mid Pac

- High-abrasion rubber lug outsole adds durability and longer wear.
- Ultra-composite shanks reinforce construction and support arch.
- Specialized rubber compound prevents ozone deterioration.
- Steel toe, steel midsole and metatarsal meet ASTM F2413-05.

Men's Whole Sizes: 6-15



#### 2221 Black

##### Ranger Flanker 16 Metatarsal Safety Hi Pac

- High-abrasion rubber lug outsole adds durability and longer wear.
- Ultra-composite shanks reinforce construction and support arch.
- Specialized rubber compound prevents ozone deterioration.
- Steel toe, steel midsole and metatarsal meet ASTM F2413-05.

Men's Whole Sizes: 6-15



### Full Metatarsal Guard Rubber Boots

Ranger's Turtleback full metatarsal guard rubber boots act as armored foot protection providing a barrier to hazards on all sides.

- Knurled, high-abrasion metatarsal and heel overlays for longer service.
- Outsoles are high-abrasion rubber for durability and longer wear.
- Specialized compound prevents ozone deterioration.



#### 2155 Red

##### Ranger Turtleback Safety Mid Pac

- Anchored metatarsal guard.
- Heavy Trac Tread™ sole and heel.
- SAFE-STEP puncture-resistant steel midsoles for maximum protection under foot.
- FOOT FORM contour cushion insoles.
- Ultra-composite shanks reinforce construction and support the arch.
- Steel toe, metatarsal guard and steel midsole meet ASTM F2413-05.

Men's Whole Sizes: 6-13



#### R2145 Black

##### Ranger Turtleback Safety Hi Boot

- Anchored metatarsal guard.
- Heavy Trac Tread™ sole and heel.
- SAFE-STEP puncture-resistant steel midsoles for maximum protection under foot.
- FOOT FORM contour cushion insoles.
- Ultra-composite shanks reinforce construction and support the arch.
- Steel toe, metatarsal guard and steel midsole meet ASTM F2413-05.

Men's Whole Sizes: 6-14



### Overboots for Metatarsal Guard Leather Footwear

Designed with Ranger's uncompromising standards, these overboots for metatarsal leather footwear offer added protection from harsh elements and extend the life of expensive leather footwear. They provide roomy comfort and flexible movement.



#### 7362 Black

##### Ranger 4-Buckle Overboot for Metatarsal Guard Footwear

- Anti-Skid Bar Tread™ outsole.
- Quality ozone-resistant rubber construction.

Men's Whole Sizes: 8-15



#### 7361 Black

##### Ranger Rubber Overboot for Metatarsal Guard Footwear

- Anti-Skid Bar Tread™ outsole.
- Quality ozone-resistant rubber construction.

Men's Whole Sizes: 7-15



## Overshoes – Extreme Function with Style



## NEOS Overshoes

Versatile, fortified protection makes NEOS Overshoes the preferred choice. Every NEOS Overshoe provides well-designed protection and innovative sole designs that deliver outstanding traction indoors or outdoors. Easily slid on over ordinary street shoes, these extremely lightweight overshoes protect and keep feet warm and dry. Great for rough conditions.

- 100% waterproof and windproof.
- Extremely lightweight and warm.
- Compact for convenient storage.
- Compatible with orthopedic and custom footwear.
- Constructed of durable, quality materials.
- Excellent traction for slip resistance.
- Graduated heights.

**NEW** RTK8 Rugged Brown**NEW** RTK15 RealTree® APG™ Camo  
(not shown)NEOS River Trekker™ Overshoe  
Hipper

## Comfort Zone to 0° F

- Tough, snag and brush resistant 900 denier nylon upper attached to the NEOS Vibram® Ninja™ deep treaded outsole.
- Heat sealed seams and RF weld construction create a 100% waterproof overshoe.
- Adjustable hook and loop belt strap help provide the most comfortable fit.

Sizes: M-XXL



## TR57 Mushroom

## NEOS Trekker™ Hi Overshoe

- 160 Denier nylon.
- NEOS Superlite outsole.
- 2.5 mil polyurethane laminated film waterproof membrane.
- Optional 10mm removable EVA insole sold separately. See page 36.
- EVA travel case sold separately. See page 36.

Sizes: XS-XXL



## VIS1 Black

## NEOS Villager™ Mid Overshoe

- 160 Denier nylon.
- NEOS Superlite outsole.
- 2.5 mil polyurethane laminated film waterproof membrane.
- Optional 10mm removable EVA insole sold separately. See page 36.
- EVA travel case sold separately. See page 36.

Sizes: XS-XXL



## VNN1 Black

## NEOS Voyager™ Mid Overshoe

- 500 Denier nylon.
- Adjustable velcro cuff.
- NEOS Perma outsole.
- 2.5 mil polyurethane laminated film waterproof membrane.
- Optional 10mm removable EVA insole sold separately. See page 36.

Sizes: XS-XXXL



## ANN1 Black

## NEOS Adventurer Hi Overshoe

- 500 Denier nylon.
- NEOS Perma outsole.
- 2.5 mil polyurethane laminated film waterproof membrane.
- Optional 10mm removable EVA insole sold separately. See page 36.

Sizes: XS-XXL



## Sizing Conversions

| SIZE                 | XS     | S      | M        | L        | XL       | XXL      | XXXL     |
|----------------------|--------|--------|----------|----------|----------|----------|----------|
| Fits Men's Sizes     | 3.5-5  | 5.5-7  | 7.5-9    | 9.5-11   | 11.5-13  | 13.5-15  | 15.5-17  |
| Fits Women's Sizes   | 5-6.5  | 7-8.5  | 9-10.5   | 11-12.5  |          |          |          |
| Insole dimensions(″) | 10.3X4 | 11X4.3 | 11.8X4.4 | 12.4X4.5 | 12.8X4.6 | 13.5X4.8 | 14.5X5.5 |

We recommend going up a size when wearing boots. For the most accurate sizing, the shoe/boot sole should be measured.



## Face Bitter Conditions Feet First



## NEOS Extreme Cold Insulated Overshoes

Cold feet, discomfort and fatigue can drain energy needed for the body to work well. NEOS insulated overshoes feature rugged waterproof construction and a layer of 4mm polyurethane foam insulation to keep workers at peak performance.

- Cold weather construction.
- Outdoor work.
- Aggressive outdoor activities.
- Refrigeration.

**EXPG Black****NEOS Explorer™ Mid Overshoe**

- 500 Denier nylon.
- NEOS Perma outsole for high traction.
- 2.5 mil polyurethane laminated film waterproof membrane.
- Optional 10mm removable EVA insole sold separately. See page 36.

Sizes: S-XXXL

**N5P3 Gray****NEOS Navigator 5™ Expandable Overshoe**

- 840 woven polyester upper.
- Aggressive Vibram® Ninja outsole ideal for outdoor enthusiasts.
- 2.5 mil polyurethane laminated film waterproof membrane.
- Snowshoe compatible heel.
- Optional 10mm removable EVA insole sold separately. See page 36.

Sizes: XS-XXL

**Sizing Conversions**

| SIZE                  | XS       | S        | M          | L          | XL         | XXL        | XXXL       |
|-----------------------|----------|----------|------------|------------|------------|------------|------------|
| Fits Men's Sizes      | 3-4.5    | 5-6.5    | 7-8.5      | 9-10.5     | 11-12.5    | 13-14.5    | 15-16.5    |
| Fits Women's Sizes    | 4.5-6    | 6.5-8    | 8.5-10     | 10.5-12    |            |            |            |
| Insole dimensions(in) | 10.3 X 4 | 11 X 4.3 | 11.8 X 4.4 | 12.4 X 4.5 | 12.8 X 4.6 | 13.5 X 4.8 | 14.5 X 5.5 |

We recommend going up a size when wearing boots. For the most accurate sizing, the shoe/boot sole should be measured.





## The Best Value from the Brand People Trust

**SERVUS**

Servus overshoes are exceptionally constructed and remain unmatched in value. Essential in any wet or muddy conditions, they provide lasting protection and easily slip over work footwear.

### 31860 Black



#### Servus 5-Buckle Overshoe

- Full Zig Zag Bar Cleat™ outsole for extra sturdy traction.
- Enameled buckle stands up to years of wet, corrosive conditions.
- Nylon lining.
- Easily stretches over bulky footwear.
- Special rubber compound prevents cracking from ozone deterioration.
- Flexible, hand-layered construction makes them pliable in cold conditions.
- Tough fabric linings for easy on/off.

Men's Whole Sizes: 6-15



### 31960 Black

#### Servus 4-Buckle Overshoe

- Full Zig Zag Bar Cleat™ outsole for extra sturdy traction.
- Nylon lining.
- Easily stretches over bulky footwear.
- Special rubber compound prevents cracking from ozone deterioration.
- Flexible, hand-layered construction makes them pliable in cold conditions.
- Tough fabric linings for easy on/off.

Men's Whole Sizes: 8-15



*"Excellent overshoes;  
they fit like a glove and  
wear like iron."*

*-Joseph Litchfield,  
Cohasset, Washington*

### 41862 Black

#### Servus 2-Buckle Chore Overshoe

- Full Zig Zag Bar Cleat™ outsole for extra sturdy traction.
- Easily stretches over bulky footwear.
- Special rubber compound prevents cracking from ozone deterioration.
- Flexible, hand-layered construction makes them pliable in cold conditions.
- Tough fabric linings for easy on/off.

Men's Whole Sizes: 6, 8-15



### 41463 Black

#### Servus E-Z Fit Work Overshoe

- Full Zig Zag Bar Cleat™ outsole for extra sturdy traction.
- Easily stretches over bulky footwear.
- Special rubber compound prevents cracking from ozone deterioration.
- Flexible, hand-layered construction makes them pliable in cold conditions.
- Tough fabric linings for easy on/off.

Men's Whole Sizes: 8-14





## Rubber Overboots – Dependable, Premium Rubber Protection

**SERVUS**

### Supersized Rubber Overboots – Generously Roomy for Leather Footwear

Servus' supersized overboots are designed to protect from harmful ozone deterioration and all kinds of unexpected weather. Roomy enough to slip over bulky leather footwear, these rubber overboots are sturdy, provide great traction and are long lasting.



#### T315 Black

##### Servus Supersize Fleece-Lined Zipper Mid Overboot

- Great for cold weather.
- Full-fleece lining for extra warmth and comfort.
- Fully gusseted zipper closure ensures 100% waterproof protection.
- Ozone-resistant rubber resists cracking for long wear.
- Oversized to fit over bulky leather footwear.
- Rugged Ribbed™ outsole for extra traction.

Men's Whole Sizes: 8-14



#### T369 Black

##### Servus Supersize 5-Buckle Overboot

- Net lining.
- Rust-resistant buckles.
- Ozone-resistant rubber resists cracking for long wear.
- Oversized to fit over bulky leather footwear.
- Rugged Ribbed™ outsole for extra traction.

Men's Whole Sizes: 8-16



#### T469 Black

##### Servus Supersize 2-Buckle Overboot

- Rust-resistant buckles.
- Net lining.
- Ozone-resistant rubber resists cracking for long wear.
- Oversized to fit over bulky leather footwear.
- Rugged Ribbed™ outsole for extra traction.

Men's Whole Sizes: 8-16



#### T419 Black

##### Servus Supersize 4-Buckle Overboot

- Same as T369 except 4-buckle.
- Rust-resistant buckles.
- Ozone-resistant rubber resists cracking for long wear.
- Oversized to fit over bulky leather footwear.
- Rugged Ribbed™ outsole for extra traction.

Men's Whole Sizes: 8-16



The oversized design allows for easy on/off while the strap makes the top adjustable so that irritating and harmful substances are kept out. Tough, rugged and ready for the dirtiest jobs.



#### A380 Yellow

##### Servus Hi Strap-On Overboot

- Cross Rib™ outsole provides secure footing.
- Comfortable net lining for easy on/off.
- Ozone-resistant rubber resists cracking for long wear.
- Oversized to fit over bulky leather footwear.

Men's Whole Sizes: 8-16





## Reliable Protection and Value Priced

**SERVUS****Rubber Overshoes**

Constructed of premium grade rubber, these overshoes provide quality protection and value. Designed to provide a comfortable fit and good traction.



*"They kept me warm and they worked as hard as I did."*

*-Evan Salgado, Cincinnati, Ohio*

**A351 Black****Servus 5-Buckle Rubber Hi Overshoe**

- Formulated to easily stretch over work footwear.
- Flexible, hand-layered construction that is pliable in cold conditions.
- Tough fabric linings for easy on/off.
- Sourced to Servus' high specifications.
- Rugged Ribbed™ outsole.
- Net lining.

**Men's Whole Sizes: 6-15**

**T314 Black****Servus Dress Zipper Rubber Mid Overshoe**

- Formulated to easily stretch over work footwear.
- Flexible, hand-layered construction that is pliable in cold conditions.
- Tough fabric linings for easy on/off.
- Sourced to Servus' high specifications.
- Cross Grip™ outsole.
- Net lining.

**Men's Whole Sizes: 8-15**

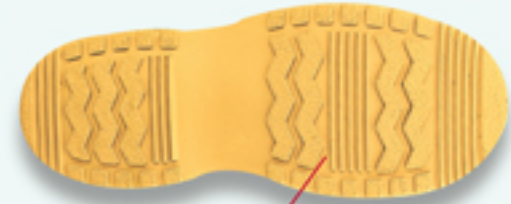


**SERVUS****Premium Coverage for Supersized Footwear**

Formulated for long-lasting wear, Servus SF SuperFit Overboots are the first injection-molded overboots made in America to fit supersized work and recreational footwear. Popular leather styles can now be protected from foul weather and other deteriorating elements.

**Kick-Off Lugs** are permanently molded on the heel and extra large to help remove overboot easily.

**Dual Compounding** permits a light, stretchable upper to be molded to a high-abrasion and slip-resistant outsole.



**Self-Cleaning Treads** on the outsole keep gripping edges free for better traction.

**Fit bulky boots up to sizes 15EEE!**

**11001 Black**

**Servus SF Mid Overboot**

- Supersized styling to fit over bulky leather footwear.
- SF wide grip outsole with textured treads for better traction.

**Men's Whole Sizes: S-XL**



**11003 Black**

**Servus SF Slip-On Overboot**

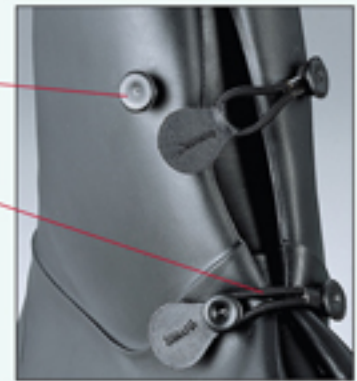
- Supersized styling to fit over bulky leather footwear.
- SF wide grip outsole with textured treads for better traction.

**Men's Whole Sizes: XS-XL**



**Boot Buttons** are part of the overshoe mold so they won't leak like add-on snaps.

**Rugged Elastic Loops** are attached on one side and draw across the generous gusset to fit snugly and comfortably with plenty of flex.



**Tabbed Grips** are stitched on the closure loops – can be easily grasped and pulled with one hand – even with gloves!

**Patterned Toes and Heels** provide additional wear resistance.

**Sizing Conversions**

| SIZE             | XS  | S   | M    | L     | XL    |
|------------------|-----|-----|------|-------|-------|
| Fits Men's Sizes | 4-5 | 6-8 | 9-10 | 11-13 | 14-15 |

## Light, Tough and Economical

**SERVUS****Servus LITE&TUF® Molded PVC Overshoes**

Reliable and practical, these economical, stretch PVC molded overshoes are light, tough and pliable. The reinforced construction at critical stress points ensures ongoing service and comfort.

- Stretchable compounding makes it easy to pull these boots on and off.
- Designed with compound formulations for general industrial use.
- 100% waterproof.
- Seamless, molded construction.
- Quick-snap closure.
- Easy to sanitize.

*"These Servus PVC overshoes are durable, and I like that they are made in the U.S.A."*

*-Mark Miller, Weston, Missouri*



**76919 Black**

**Servus E-Z Kleen™ LITE&TUF® Stretch Mid Overshoe**

- Molded construction.
- Snap closure.
- No tread, easy-clean outsole.
- Individually boxed.

Men's Sizes: M, L, XL



**B7914 Black**

**Servus LITE&TUF® Stretch Hi Overshoe**

- Seamless, molded construction.
- Snap closure.
- Diamond Skid Resistant™ outsole.
- Bagged.

Men's Whole Sizes: 6-16



**70914 Black (not shown)**

**Servus LITE&TUF® Stretch Hi Overshoe**

- Same as B7914 except boxed.

Men's Whole Sizes: 6-16



**B7916 Yellow**

**Servus LITE&TUF® Stretch Hi Overshoe**

- Same as B7914 except yellow.
- Bagged.

Men's Whole Sizes: 7-16

**Unique**

No-tread pattern for easy sanitation.



Available on 76919 only.



**B7926 Yellow**

**Servus LITE&TUF® Stretch Mid Overshoe**

- Molded construction.
- Snap closure.
- Diamond Skid Resistant™ outsole.
- Bagged.

Men's Whole Sizes: 7-16



**B7924 Black**

**Servus LITE&TUF® Stretch Mid Overshoe**

- Same as B7926 except black.
- Bagged.

Men's Whole Sizes: 6-16



**70924 Black (not shown)**

**Servus LITE&TUF® Stretch Mid Overshoe**

- Same as B7924 except boxed.

Men's Whole Sizes: 4-16





## Designed for Performance – Priced to Sell

**SERVUS****Servus LITE&TUF® Hi-Cut STRETCH-LITE™ Molded PVC Overshoes**

These popular stretch PVC overshoes are a favorite in the processing industry where a well-designed tread is necessary. Designed with classic styling and quality construction, they are proven performers at a value price.

- Specially compounded to easily stretch over all styles of footwear.
- Seamless, molded construction for uniform fit.
- Easy to sanitize.
- Skid-resistant outsole.

**B7993 Black****Servus LITE&TUF® STRETCH-LITE™ Overshoe**

- Heavy, molded construction.
- Skid-resistant outsole.
- Bagged.

**Men's Sizes: S-XXL****76993 Black****Servus LITE&TUF® STRETCH-LITE™ Overshoe**

- Same as B7993 except boxed.

**Men's Sizes: S-XXL****B7995 Amber****Servus LITE&TUF® STRETCH-LITE™ Overshoe**

- Heavy, molded construction.
- Skid-resistant outsole.
- Bagged.

**Men's Sizes: S-XXL****B7994 Yellow****Servus LITE&TUF® STRETCH-LITE™ Overshoe**

- Heavy, molded construction.
- Skid-resistant outsole.
- Bagged.

**Men's Sizes: S-XXL****Skid-Resistant Outsole**

Well-designed tread is designed to resist skidding in processing plants.

**Sizing Conversions**

| SIZE             | S     | M     | L       | XL    | XXL   |
|------------------|-------|-------|---------|-------|-------|
| Fits Men's Sizes | 6-7.5 | 8-9.5 | 10-11.5 | 12-13 | 14-15 |

## Put Some Real Bite into Slip-Resistant Protection

**SERVUS**

These Servus® overshoes are designed with aluminum oxide grit, compressed into the PVC outsole, for enhanced slip resistance. They provide tough, long-wearing protection against many industrial chemicals.

### LITE 'N GRIT® Overshoes

These overshoes have the right amount of grit in the right places. Constructed with extra strong, stretch PVC, these lightweight overshoes easily pull over leather shoes and boots. They are ideal on ice and snow.

- Aluminum oxide grit.
- 100% waterproof, seamless overshoes.



SR108 trimmed to 10".

#### SR108 Black

##### Servus LITE 'N GRIT® Trimmable PVC Overshoe

- High quality stretch PVC seamless, molded construction.
- Aluminum oxide grit pattern for enhanced slip resistance.
- Easily trim rib for 10" height if preferred.

Men's Sizes: S-XXXL



#### SR105 Black

##### Servus LITE 'N GRIT® PVC Slip-On Overshoe

- High quality stretch PVC seamless, molded construction.
- Aluminum oxide grit pattern for enhanced slip resistance.

Men's Sizes: S-XXXL



#### Sizing Conversions

| SIZE               | S   | M     | L     | XL    | XXL   | XXXL  |
|--------------------|-----|-------|-------|-------|-------|-------|
| Fits Men's Sizes   | 6-7 | 8-9   | 10-11 | 12-13 | 14-15 | 16-17 |
| Fits Women's Sizes | 8-9 | 10-11 | 12-13 |       |       |       |



*Supersized for roomy comfort.  
Gritted for better traction.*

### Servus SF™ Grit Overboots

The SF Grit™ style overboots are uniquely designed to provide more room to fit today's bulkier leather footwear. Plus, the clever closure system and extra tough stretch PVC make it easy to pull these overboots on and off. These overboots are also designed with aluminum oxide grit for enhanced slip resistance. Great for slush and snow.



Made to protect bulky leather footwear.

#### SR110 Black

##### Servus SF GRIT™ Slip-Resistant Mid Overboot

- Heavy-duty PVC construction.
- Supersized styling.
- SF wide grip outsole with aluminum oxide grit.

Men's Sizes: S-XL



#### SR111 Black

##### Servus SF GRIT™ Slip-Resistant Overboot

- Same as SR110 except 4".

Men's Sizes: XS-XL



#### Sizing Conversions

| SIZE             | XS  | S   | M    | L     | XL    |
|------------------|-----|-----|------|-------|-------|
| Fits Men's Sizes | 4-5 | 6-8 | 9-10 | 11-13 | 14-15 |



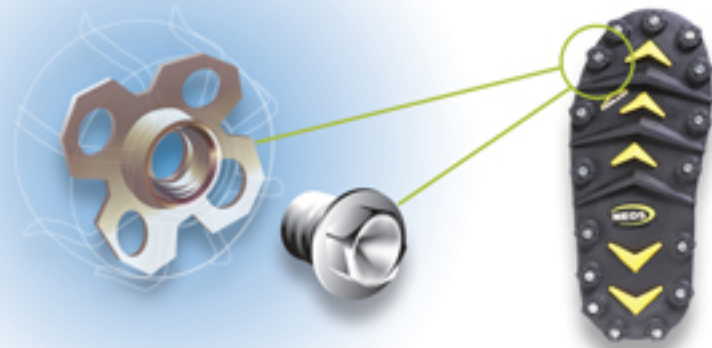
## Improved Footing When Tough Winter Conditions Require Extra Traction



### STABILicers®

NEOS' STABILicers® line uses 32 replaceable studs per pair embedded in the sole to help maintain traction in the worst winter conditions and helps lower the risk for slips and falls on and off the job site. Comfortable for long wear, STABILicers® are a smart solution for warmth and traction control.

- NEOS STABILicers outsole.
- 2.5 mil polyurethane internal bootie with waterproof membrane.
- Optional 10mm removable EVA insole sold separately.
- Cleat wrench included with each pair.



#### EXSG Black

##### NEOS Explorer™ STABILicers® Mid

- 500 Denier nylon upper.
- 4mm polyurethane foam insulation.

Sizes: XS-XXXL



Unroll for instant added protection.

#### N5P3S Black

##### NEOS Navigator 5™ STABILicers® High

- 840 woven polyester.
- Ice traction and insulated with extendible gaiter for more coverage.
- 4mm polyurethane foam insulation.

Sizes: XS-XXXL



#### VNS1 Black

##### NEOS Voyager™ STABILicers® Mid

- 500 Denier nylon upper.
- NEW adjustable Velcro cuff for a snug fit.

Sizes: XS-XXXL



#### SRC

##### NEOS STABILicers® Replacement Cleats

See page 36.

#### Sizing Conversions

| SIZE                 | XS       | S        | M          | L          | XL         | XXL        | XXXL     |
|----------------------|----------|----------|------------|------------|------------|------------|----------|
| Fits Men's Sizes     | 3-4.5    | 5-6.5    | 7-8.5      | 9-10.5     | 11-12.5    | 13-14.5    | 15-16.5  |
| Fits Women's Sizes   | 4.5-6    | 6.5-8    | 8.5-10     | 10.5-12    |            |            |          |
| Insole dimensions(*) | 10.3 X 4 | 11 X 4.3 | 11.8 X 4.4 | 12.4 X 4.5 | 12.8 X 4.6 | 13.5 X 4.8 | 14.5 X 5 |

We recommend going up a size when wearing boots. For the most accurate sizing, the shoe/boot sole should be measured.

### Servus Studs®

This slip-resistant, carbide-studded pullover bites into snow and ice for added grip. Made of extra strong stretch rubber to draw snugly over shoes and boots, these over soles are compact and easily store in a pocket or work belt.



#### SR101 Black

##### Servus Studs®

- Tough, tungsten carbide studs are replaceable.
- Made in U.S.A. under U.S. Patent No. D377,710.
- Studs are fixed in each stretch outsole cover.

Sizes: S/M-XXL



#### SR201

##### Servus Replacement Studs Kit

See page 36.



#### Sizing Conversions

| SIZE               | S/M  | L     | XL    | XXL |
|--------------------|------|-------|-------|-----|
| Fits Men's Sizes   | 7-9  | 10-12 | 13-15 | 16+ |
| Fits Women's Sizes | 9-11 | 12-13 |       |     |

## Workers Count on their Quality and Comfort

SERVUS



RANGER

## Rubber Safety Hip Boots

When being well protected calls for more coverage, these safety hip boots are the answer. The additional length provides versatility for many industrial applications and is a crucial safety barrier against harmful substances. The ozone-resistant rubber shell promotes exceptional durability and abrasion resistance for years of use in harsh conditions.

- Constructed of premium, commercial grade rubber.
- Specialized rubber compounding prevents cracking from ozone deterioration and promotes long wear.
- Trac Tread™ outsole and heel provide excellent traction and slip resistance.
- Rugged, yet comfortable fabric lining for easier on and off and longer wear.
- Ultra-composite shanks reinforce construction and support the arch.
- Flexible, hand-layered construction allows for tough and durable protection.



## 11135 Olive

## Northernner Irrigation Stormking Hip Boot

- Heavy Trac Tread™ sole and heel.
- Shovel-shank reinforcing strip for extra arch support and wear resistance.
- Built-in cushion insole.

Men's Whole Sizes: 5-14



## 2142 Black

## Ranger Safety Stormking Hip Boot

- Heavy Trac Tread™ sole and heel.
- Adjustable, snug-up side strap.
- Steel toe meets ASTM F2413-05.

Men's Whole Sizes: 6-15



## 2143 Black

## Ranger Safety Full Hip Boot

- Heavy Trac Tread™ sole and heel.
- Adjustable, stay-right belt strap for snug and secure fit.
- Steel toe meets ASTM F2413-05.

Men's Whole Sizes: 6-14



## 11444 Black

## Servus Seafarer™ Full Hip Boot

- Heavy-duty pull-on loops allow easier boot access.
- Trac Tread™ sole and heel.
- Ultra-composite shank.
- Boot duck lining adds an extra comfort layer.

Men's Whole Sizes: 6-14



## 11146 Black

## Servus Full Hip Boot

- High-abrasion Trac Tread™ sole and heel.
- Shovel-shank reinforcing strip for extra arch support and wear resistance.
- Ultra-composite shank.

Men's Whole Sizes: 6-14





## These Hip Boots and Waders Have it All – the Right Price, Comfort and Quality Design

SERVUS

**RANGER**  
 The Outdoor Tradition.

When the mud or water gets knee deep, hip boots or waders offer a welcome relief. Great for tough outdoor conditions, these boots are formulated for longer life and built-in soles offer all-day comfort.

- Premium commercial grade rubber uppers.
- Trac Tread™ outsole and heel provide excellent traction and slip resistance.
- Rugged, yet comfortable fabric lining for easier on and off and longer wear.
- Steel shanks reinforce construction and support the arch.
- Flexible, hand-layered construction allows for tough and durable protection.



### T112 Black

#### Servus Safety Full Hip Boot

- Steel shanks for arch support.
- Heavy Trac Tread™ sole and heel.
- Built-in cushion insole.
- Steel toe meets ASTM F2413-05.

Men's Whole Sizes: 7-15



### A111 Forest Green

#### Ranger Stormking Hip Boot

- Steel shanks for arch support.
- High-abrasion Trac Tread™ outsole.
- Shovel-shank reinforcing strip for extra arch support.
- Built-in cushion insole.

Men's Whole Sizes: 4-14



### A2070 Forest Green

#### Ranger Bluecat Insulated All-Rubber Boot Foot Chest Wader

- Rubber uppers with soft cotton lining.
- Inside chest pocket to keep items secure and dry.
- Rustproof suspender buttons.
- Nylon drawstring belt loops.
- All-rubber, 100% waterproof boot foot with self-cleaning cleated outsole.
- Steel shanks for added support.
- Polymeric foam insulation built in each foot for extra warmth and comfort.

Men's Whole Sizes: 6-14



Suspenders and belt sold separately. See page 37.



### A2300 Forest Green

#### Ranger Bullhead Insulated All-Rubber Full Hip Boot

- Adjustable belt strap and knee harness.
- Polymeric foam insulation with additional 9mm felt insole provides extra layer for warmth.
- Self-cleaning, cleated outsole offers better traction and easy maintenance.

Men's Whole Sizes: 4-14





## Working in Nasty Conditions has Never Been More Comfortable

What makes The Original Muck Boot Company® boots so great? It's all in the design. Naturally lightweight and extremely comfortable, they keep feet warm and dry in almost any climate or condition. Made of natural rubber, these boots will stay comfortable for years.

The Original Muck Boot Company® boots are loaded with comfort features:

- Lightweight, self-insulating CR flex-foam bootie 5mm construction.
- 4-way stretch nylon offers great flexibility.
- Breathable Airmesh lining wicks away humidity and perspiration.
- 100% waterproof top to bottom.
- Removable EVA sock liner adds support and slipper-soft molded comfort in the footbed.
- Natural rubber overlays are vulcanized to form an extremely durable and lightweight shell.
- Steel toe style meets ASTM F2413-05.



**CHS-000A** Black

### The Original Muck Boot Company Hi Chore™ Boot with Steel Toe

- Diamond-textured toe and heel reinforcement resists scuffs and scratches.
- Kick rim for hands-free removal.
- Stretch-fit top-line binding for snug calf fit.
- Wide-cut heel base for stability.
- Upper is triple reinforced in the toe and quadruple reinforced in the heel.
- Steel toe meets ASTM F2413-05.

Men's Whole Sizes: 5-14



**CHH-000A** Black (not shown)

### The Original Muck Boot Company Chore™ Hi Boot

- Same as CHS-000A without steel toe.

Men's Whole Sizes: 5-16



**CHM-000A** Black

### The Original Muck Boot Company Chore™ Mid Boot

- Diamond-textured toe and heel reinforcement resists scuffs and scratches.
- Kick rim for hands-free removal.
- Stretch-fit top-line binding for snug calf fit.
- Wide-cut heel base for stability.
- Upper is triple reinforced in the toe and quadruple reinforced in the heel.

Men's Whole Sizes: 5-16



**JOB-000A** Black

### The Original Muck Boot Company Jobber™ Shoe

- 10mm kick rim for hands-free removal.
- Additional achilles reinforcement for added protection.
- Seamless, quick-clean rubber overlay.
- Self-cleaning outsole wraps foot for maximum protection and stability.
- Instep protector (rubber reinforcement) for added protection.
- Added toe protection with wrap-up toe bumper.

Men's Whole Sizes: 4-14



**EWC-333T** Moss

### The Original Muck Boot Company Edgewater® Camp Shoe

- Stretch-fit top-line binding for snug fit.
- TracTrol™ sole for better traction.
- Reverse radius for propulsion.
- Forward radius for breaking.
- Natural rubber upper reinforcement.
- Full-perimeter wrapped outsole provides maximum protection.

Men's Whole Sizes: 4-14





## Seamless Protection and Comfort

**SERVUS™****Injection-Molded Footwear**

Injection-molded footwear offers ultimate comfort and reliable protection in a variety of work and outdoor applications. Choose from the high performing, dual-compound Iron Duke to the Servus CT™ economy knee boot.

- Seamless, molded construction.
- Flexible upper design allows easy movement.
- Reinforced construction at critical stress points for comfort and long wear.
- FOOT FORM contour cushion insole adds an exceptional comfort layer.

**Deep Angle Cleated™ Sole**

The distinctive sole and heel help grip on slick surfaces. Specialty PVC base alloys withstand cold temperature and farm and industrial environments.

**18801 Black****Servus Iron Duke® Polyblend Safety Hi Boot**

- Deep Angle Cleated™ sole and heel.
- Steel toe meets ASTM F2413-05.
- Steel shank for additional support.

Men's Whole Sizes: 5-13



Also available in a work shoe. See page 30.

**18802 Black (not shown)****Servus Iron Duke® Polyblend Hi Boot**

- Same as 18801 without steel toe.

**73505 Black****Servus Safety Hi Boot**

- Deep Angle Cleated™ sole and heel.
- Steel toe meets ASTM F2413-05.
- Steel shank for additional support.

Men's Whole Sizes: 6-13

**Servus CT™**

A long list of advanced comfort features balanced with an economic price tag, CT (Comfort Technology) offers a unique scalloped top-line design to accommodate flexing in the calf area to reduce irritation as well as graduated boot heights that are consistent with shoe sizes for better fit and comfort.

The unique Trac10™ sole design enhances traction and durability with an ergonomic frame design and interior lugs. The contour heel cup molding reduces heel slippage while the EVA FOOT FORM provides sneaker-like comfort for all-day wear. Sleek and contemporary, the CT Knee Boot is a great choice for general industrial conditions.

**18821 Black****Servus CT™ Economy Safety Hi Boot**

- Steel toe meets ASTM F2413-05.

Men's Whole Sizes: 3-15

**18822 Black (not shown)****Servus CT™ Economy Hi Boot**

- Same as 18821 without steel toe.

Men's Whole Sizes: 3-15

**74928 White****Servus Mid Boot**

- Deep angle cleated sole and heel.

Men's Whole Sizes: 4-13

**NEW 74930 White (not shown)****Servus Hi Boot**

- Same as 74928 except HI.

Men's Whole Sizes: 4-13







## Steel Midsoles Offer Protection Underfoot

Glass, metal or other sharp materials can compromise foot protection. Footwear with built-in flexible steel midsoles provides extra protection underfoot, minimizing accidental punctures. This intelligent design reduces unnecessary risk and extends the life of the footwear.

Both the high quality North PRM Hi Boot and Ranger Safety Hi Boot are constructed with a steel midsole.



### Steel Midsole

Built-in flexible steel midsole provides extra protection underfoot, minimizing accidental punctures.



**2144 Black**

#### Ranger Rubber Safety Hi Boot

- Puncture-resistant midsole.
- Heavy Trac Tread™ sole and heel provide excellent traction in many different footings.
- Steel toe meets ASTM F2413-05.
- Steel midsole meets ASTM F2413-05.

Men's Whole Sizes: 5-15



**75145C Black/Orange**

#### North PRM PVC Safety Hi Boot

- Steel toe and steel midsole meets ASTM F2413-05 and CAN/CSA Z195-02 Grade 1.
- Self-cleaning outsole design.

Men's Whole Sizes: 7-14





## Indispensable Shoes for the Toughest Conditions

SERVUS

RANGER

## Safety Work Shoes

These boots offer incredible protection and perform well in many industrial settings. Choose between premium grade rubber shoes formulated to resist ozone deterioration for long boot life or the Iron Duke injection-molded PVC shoe formulated with a high-performing dual compound. Both shoes have comfort features for all-day wear and reinforced construction to support the arch. These 100% waterproof shoes are built tough, yet comfortable, making them indispensable. Steel toe meets ASTM F2413-05.

## R1141 Black

## Ranger 5-Eyelet Safety Work Shoe

- Heavy Trac Tread™ sole and heel provide excellent traction in many different footings.
- Ultra-composite shanks reinforce construction and support the arch.
- Comfortable fabric lining allows feet to slip in and out easily.
- Easy 5-eyelet lacing design.

Men's Whole and Half Sizes: 7-12  
Men's Whole Sizes: 5-6, 13-14



## 1142 Black

## Ranger Buckle Safety Work Shoe

- Heavy Trac Tread™ sole and heel provide excellent traction in many different footings.
- Comfortable fabric lining allows feet to slip in and out easily.
- Ultra-composite shanks reinforce construction and support the arch.
- Quick-release buckle design.

Men's Whole and Half Sizes: 7-12  
Men's Whole Sizes: 5-6, 13



## 1152 Black

## Ranger Buckle Safety Work Shoe

- Sure-Loc™ suction sole and heel for added traction.
- Comfortable fabric lining allows feet to slip in and out easily.
- Ultra-composite shanks reinforce construction and support the arch.
- Quick-release buckle design.

Men's Whole and Half Sizes: 7-12  
Men's Whole Sizes: 5-6, 13



## 73104 Black

## Servus Iron Duke® Polyblend PVC 5-Eyelet Safety Shoe

- FOOT FORM™ contour insole provides added comfort.
- Deep V-Trac sole and heel for added traction.
- Reinforced shank for added arch support.

Men's Whole Sizes: 6-13





**SERVUS****Boots for Heavy-Duty Jobs****Heavy-Duty Knee Boots**

Heavy-duty jobs require footwear with more substance. For applications such as water and sewage where good traction is a must, boots featuring extra grip and slip resistance provide additional safety. Premium grade rubber materials formulated to ensure superior performance and long-term use.

**T111 Black****Servus Irrigation Hi Boot**

- High-abrasion Trac Tread™ outsole designed for wear resistance and excellent traction.
- Steel shank reinforces construction and supports the arch.
- Shovel-shank arch guard provides additional protection from wear.
- Built-in cushion insole adds an extra comfort layer.

**Men's Whole Sizes: 3-15****A383 Black/Rust****Servus Swamp Hi Boot**

- Steel shank reinforces construction and supports the arch.
- Beveled Bar Cleated™ sole and heel offers outstanding grip and slip resistance.
- Built-in cushion insole adds an extra comfort layer.

**Men's Whole Sizes: 5-14****11490 Black****Servus Insulated Hi Boot**

- Heavy-duty pull-on loops for easy on/off convenience.
- Trac Tread™ sole and heel.
- Felt midsole offers additional comfort layer.

**Men's Whole Sizes: 7-14**



## Boots for Heavy-Duty Jobs

SERVUS



RANGER

**Rubber Safety Hi Boot – Reinforced for Longer Durability**

Constructed of premium, long-wearing commercial grade rubber, these boots are specially compounded to prevent ozone deterioration. The ultra-composite shanks reinforce construction for longer durability and support the arch for comfortable wear.

- Flexible, hand-layered construction.
- Tough, comfortable fabric linings for easy on and off.
- Cushion insoles reduce fatigue for all-day comfort.



2141 Black

**Ranger Safety Hi Boot**

- Heavy Trac Tread™ sole and heel provide excellent traction in many different footings.
- Steel toe meets ASTM F2413-05.

Men's Whole Sizes: 5-14



*"I love my boots. They are lightweight and comfortable and don't come off in deep mud."*

-Alvin Lows  
Lawrenceburg, Indiana

**Over-the-Foot Rubber Footwear – Effective Footwear for Multiple Uses**

These classic weather tamers are well matched for inclement weather and wet working conditions. The styling and materials make these popular all-purpose boots.

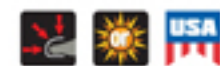


21607 Olive

**Servus Engineer Mid Safety Pac**

- High-abrasion Trac Tread™ outsole designed for wear resistance and excellent traction.
- Steel toe meets ASTM F2413-05.
- Flexible, hand-layered construction.
- Tough, comfortable fabric linings for easy on and off.
- Cushion insoles reduce fatigue for all-day comfort.

Men's Whole Sizes: 6-13



11134 Olive

**Northerner Hi Boot**

- Shovel-shank arch guard provides extra comfort and wear resistance.
- Heavy Trac Tread™ sole and heel provide excellent traction in many different footings.
- Flexible, hand-layered construction.
- Tough, comfortable fabric linings for easy on and off.
- Cushion insoles reduce fatigue for all-day comfort.

Men's Whole Sizes: 6-14



## The Dielectric Difference

Dielectric footwear is essential protection for utility workers and anyone else that comes in contact with electrical hazards. Workers must be constantly on guard. Ranger's line of superior dielectric footwear keeps the worry at bay and the focus on the job.

### Over-the-Foot Dielectrics

Trust Ranger Dielectrics high-quality boots for electrical hazard situations. They are tested at 20,000 Volts AC and exceed the electrical hazard requirements of ASTM F2413-05 and offer excellent slip-resistant soles for indoor and outdoor protection.

- Premium grade rubber with safety yellow trim.
- Special ozone-resistant rubber compound.
- Flexible, hand-layered construction.
- Durable nylon linings for easy on/off.
- Built-in cushion insoles reduce fatigue for all-day comfort.
- Ultra-composite shanks reinforce construction and support the feet.

Do not wear these specialized boots near explosives or on any job requiring conductive footwear. Check with your sales representative if there is a question.



#### 6141 Red

##### Ranger Dielectric Safety Shoe

- SURE-LOC™ sole and heel has a flatter surface-to-surface, razor-edge tread that is ideal for indoor protection.
- Steel toe meets ASTM F2413-05.
- Meets electrical hazard requirements of ASTM F2413-05.

Men's Whole Sizes: 5-13



#### R6130 Red

##### Ranger Dielectric Safety Mid Pac

- SURE-LOC™ sole and heel has a flatter surface-to-surface, razor-edge tread that is ideal for indoor protection.
- Steel toe meets ASTM F2413-05.
- Meets electrical hazard requirements of ASTM F2413-05.

Men's Whole Sizes: 6-13



SERVUS

RANGER

### Lineman's All-Weather Zip Pac – Impressively Designed with Safety and Function

This over-the-foot pac is loaded with ASTM safety features and benefits such as convenient zipper design, and waterproof and insulated comfort. Plus the Heavy Trac Tread™ sole and heel provide confident traction on wet and slippery surfaces.

#### 21622 Black

##### Servus Lineman's Zip Mid Pac

- Adjustable side strap provides a snug fit.
- Polymeric foam insulation.
- Heavy Trac Tread™ sole and heel provide excellent traction in many different footings.
- Soft, 3/8" insulating felt midsole for warmth.
- Heavy-duty zipper.
- Steel toe meets ASTM F2413-05.
- Midsole meets ASTM F2413-05.
- Meets electrical hazard requirements of ASTM F2413-05.

Men's Whole Sizes: 4-13



#### 6131 Red

##### Ranger Dielectric Safety Shoe

- Trac Tread™ sole and heel is a good choice for outdoor protection.
- Steel toe meets ASTM F2413-05.
- Meets electrical hazard requirements of ASTM F2413-05.

Men's Whole Sizes: 6-13





## Balance the Cool Factor and Fight Fatigue

**SERVUS**


### Insulated Over-the-Foot Rubber Footwear

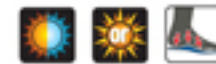
Insulation helps keep feet warm and closer to the body's temperature. Wearing comfortable, insulated footwear can actually enhance work performance. Made of premium commercial grade ozone-resistant rubber for durability and long wear, these boots are an ideal choice for many work or outdoor conditions.

- Polymeric foam insulation surrounds the foot in warmth.
- Soft, felt midsole offers an added layer comfort.
- Tough, comfortable fabric lining for easy on/off that resists wear from the inside out.
- Cushion insoles reduce fatigue for all-day comfort.
- Ultra-composite shanks reinforce construction and support the arch.


**78590** Marsh Brown

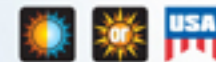
#### Servus Insulated 2-Buckle High Pac

- Contour-shaped washable insole.
- Easy on/off wrap design accommodates insulated footwear.
- V-Bar Cleat sole and heel.

**Men's Whole Sizes: 7-14**

**11190** Olive

#### Northernner Insulated High Boot

- Heavy Trac Tread™ sole and heel.

**Men's Whole Sizes: 6-14**




## An Insulated Boot For Every Chilling Job Out There

SERVUS

RANGER

### Footwear for Refrigeration & Extreme Cold

Cold feet can drain energy needed for the body to work well. Discomfort and fatigue steal from production efficiency. This insulated footwear features rugged construction, using proven insulating materials to help keep everyone at peak performance.

- Cold weather construction.
- Outdoor work.
- Refrigeration.



### Insulated Leather Top Safety Pacs

These rugged leather pac boots can take a beating in freezing and subfreezing temperatures and still provide unfailing protection year after year. The pac boots are great for outdoor winter activity or on-the-job site in harsh conditions.

- Lightweight, washable, replaceable ¾" foam liner with a Thermolite® footbed.
- Extended and ribbed supporting steel shank.

### Insulated Leather Top Pacs

Ranger leather top footwear combines the feel, fit, and lacing stability of leather footwear with the warmth and protection of rubber boots. They are ultra durable and lightweight with natural rubber bottoms and are well suited for extreme weather applications. These proven pac boots are designed with excellent traction control to ensure solid footing on unstable surfaces.

- Rugged leather uppers offer protection from the elements.
- Waterproof rubber bottoms for essential protection.
- ¾" Insulated foam liners for enhanced protection from cold weather.
- Supporting shanks for additional support.



#### A421 Black

##### Servus Leather Top Mid Pac

- Waterproof rubber bottom.
- Bar Grip™ outsole and heel provide excellent traction.
- 3/8" felt midsole for added warmth underfoot.
- Steel toe meets ASTM F2413-05.
- Steel midsole meets ASTM F2413-05.

Men's Whole Sizes: 6-15



Comfort Zone to **-50°**



#### A465 Black

##### Ranger Summit Thinsulate® 100% Waterproof Mid Pac

- Waterproof leather top pac.
- TPR molded shell and Omega XT™ outsole for excellent traction.
- Molded-in heel kick for boot removal.

Men's Whole Sizes: 7-14



Comfort Zone to **-60°**

#### A466 Brown (not shown)

##### Ranger Summit Thinsulate® 100% Waterproof Mid Pac

- Same as A465 except brown.



#### A422 Black

##### Servus Double Insulated Leather Top Mid Pac

- Waterproof rubber bottom.
- Trac Tread™ outsole and heel ensure a solid grip.
- Built-in, double-insulating foam provides incredible warmth and extra protection.
- 3/8" felt midsole for added warmth underfoot.
- Steel toe meets ASTM F2413-05.

Men's Whole Sizes: 7-14



Comfort Zone to **-75°**



#### A485 Earth Brown

##### Ranger Apun Thermolite® Leather Top Mid Pac

- Brushed nylon, moisture-wicking inner lining keeps feet dry.
- Molded two-color ClawMax outsole for outstanding traction and grip.
- Rustproof speed laces.
- Molded-in heel kick for quick boot removal.
- Waterproof TPR bottom.

Men's Whole Sizes: 7-14



Comfort Zone to **-50°**



## Special Operations Footwear

SERVUS

NORTH

Specifically designed for military diving operations, this is a serious boot packed with special features made to withstand pressurized conditions of diving.

- Vulcanized hand-laid construction form an extremely durable shell.
- Lead weight riveted to midsole for added weight.
- Rubber upper is resistant to ozone cracking and oxidation.
- Calendered rubber outsole provides ultimate traction.
- Adjustable straps for watertight fit.



11426 Black

### Servus Military Diver Mid Height Boot

- Steel toe and steel midsole meet ASTM F2413-05.
- Meets U.S. Military Spec Mil-B-87031B(SH) 6.
- Available on special make-up basis. Minimums apply.

Sizes: 1-4



#### Sizing Conversions

| SIZE             | 1 | 2  | 3  | 4  |
|------------------|---|----|----|----|
| Fits Men's Sizes | 8 | 10 | 12 | 14 |

## Chem Overboot

The North SuperFit (SF) Chem Overboot is an outstanding choice when special application footwear is required.

Tested to meet the MIL-0-43995C and Commercial Spec A-A-59520, this overboot provides protection in hazardous situations.



11095 Black

### North SuperFit Chem Mid Height Overboot

- Highly durable, injection-molded one-piece construction.
- Slip-resistant, self-cleaning outsole.
- Super Fit construction.
- 100% waterproof protection.

Men's Whole Sizes: S-XL



#### Sizing Conversions

| SIZE             | S   | M    | L     | XL    |
|------------------|-----|------|-------|-------|
| Fits Men's Sizes | 6-8 | 9-10 | 11-13 | 14-15 |

## Disposable Bootie

Easy, convenient protection – these handy booties are optimal for protection in messy situations. Just wear and dispose of when finished.



A352 Yellow

### North Latex Disposable Mid Height Bootie

- Texturized, slip-resistant outsole.
- Minimum order 50 pairs, 1 case.
- 100% waterproof protection.

Men's Whole Sizes: S-XXL

#### Sizing Conversions

| SIZE             | S   | M   | L     | XL    | XXL   |
|------------------|-----|-----|-------|-------|-------|
| Fits Men's Sizes | 6-7 | 8-9 | 10-11 | 12-13 | 14-15 |

## Hazmat Knee Boot

The North Hazmat knee boot combines state of the art protection with some of the most innovative comfort designs available in injection molded knee boots. Extensive research and fit trials were the key to our "foot-fitting" design and ergonomic foot bed which have created a new level of comfort in hazardous-duty injection molded footwear.

Meets MIL-B-51176F Toxicological Boot.  
OSHA Level A: meets the chemical requirements of NFPA 1991 Standard on Vapor Protective Suits for Hazardous Chemical Emergencies, 2005 Edition.



NEW 75177 Green

### NORTH 15" HAZMAT KNEE BOOT

- Steel toe and steel midsole meet ASTM F2413-05.
- Ergonomically designed vamp and heel.
- Ergonomic footbed.
- 100% waterproof protection.
- Extended ribbed steel shank.

Men's Sizes: 7-15



## Accessories – Assured Quality, Fit, and Replacement

SERVUS

NEOS  
OVERSHOE

RINGER

XTRATUF

These accessories include carefully selected products that can enhance the job performance and comfort of our industrial protective footwear.



### NSS

#### NEOS Stuff Sack

This handy pull-closure sack keeps NEOS footwear together and protected. The water-resistant 160D nylon bag is customized to fit all sizes of NEOS overshoes. Easily stores overshoes after use and helps prevent home and car interiors from outside dirt, debris and salt.

**Sizes:** S, M, L

**S** - Fits noninsulated styles XS-XXXL

**M** - Fits insulated styles XS-M

**L** - Fits insulated styles L-XXXL



### EVA

#### NEOS EVA Insoles

The removable 10mm EVA insoles offer additional insulation for warmth and added volume inside overshoes. They can be quickly removed for cleaning or when not needed.

**Sizes:** XS-XXL



### SRC

#### NEOS STABILicers® Cleats

These long-wearing, case-hardened cleats allow easy replacement of worn or clogged cleats. They save money and can be changed quickly with the NEOS socket wrench.

For NEOS overshoe styles:  
Explorer™ STABILicers®,  
Navigator 5™ STABILicers® and  
Voyager STABILicers®

Replacement Cleats – Packs of 32



### VITVL2

#### NEOS Villager EVA Travel Case

Designed for use with the Villager and Trekker series, these cases are constructed out of a sturdy 600D Polyester backing 5mm EVA. They are lightweight and water-resistant – a great solution for storing these styles of overshoes in the car, backpack, etc.

**Fits Sizes:** XS-XXL



### 29000

#### Servus Puncture-Resistant Midsole

Cushion-covered, flexible steel inserts provide puncture protection underfoot. Steel will not deteriorate or lose effectiveness. Use as an insole or midsole. Can be inserted by size into most over-the-foot boots.

**Whole Sizes Only:** 5-14



### SR201

#### Servus Replacement Studs Kit Package of 12

- Easily replaces worn studs in style SR101.
- Includes tough tungsten carbide studs and stud extractor and inserter tools.







### 27001

#### Servus FOOT FORM™ Contour Comfort Replacement Insoles

Here's the extra layer of stabilizing support and comfort every foot needs. These lightweight insoles are contour formed to the foot with lift at the arch and support at the heel. Removable, washable, and replaceable.

Whole Sizes: 3-15



### 28114

#### Servus 3/8" Felt Insoles

The perfect footbed for waterproof boots. They provide thick cushioning for added comfort and insulate from the ground up. Contours each foot with wear for custom support. They are available in wide widths that can be easily trimmed. Removable and washable for easy care.

Whole Sizes: 3-15



### 27002

#### Servus Breathe-O-Prene® Replacement Insoles

Designed with Breathe-O-Prene® technology, these moisture-wicking insoles have breathable, open cell structures that reduce insole drying time. The lightweight, top fabric also pulls away moisture and provides non-skid support — an essential insole for greater shock absorption and durability.

Whole Sizes: 3-15



### A417

#### Ranger THERMOLITE® Insulating Liners

Extra thick, extra warm 3/4" foam, insulating liners replace worn liners in most fabric or leather-top pacs. THERMOLITE® liners are removable and washable. Fits leather tops A421, A422, A485, A465, A466.

Whole Sizes: 6-14



### 28000

#### Ranger Deep Pile Boot Liners

The deep pile lining offers added warmth and comfort in colder temperatures. They fit most non-insulated knee boots and are an effective solution. Wear one size larger boot when wearing these liners.

Sizes: S (6-7), M (8-9), L (10-11), XL (12-13), XXL (14-15)



### 20000

#### Ranger Chest Wader Suspenders

Rugged, dark brown suspenders of comfortable wide-banded ballistic nylon strapping. H-Back comfort and support. Adjustable, "set-it-and-forget-it" clips. Designed for RANGER A2070 and many other chest waders.



### 23000

#### Ranger Chest Wader Belt

Durable, dark brown belt of comfortable wide-banded ballistic nylon strapping. "Set-it-and-forget-it" adjustable sizing. One-handed, quick-release buckle. Fits RANGER A2070 and many other chest waders. Can double as a gear strap and handle.



### 25002

#### AQUASEAL® Boot Repair

End annoying seepage and leaks with AQUASEAL® urethane adhesive. Repairs neoprene, rubber and coated fabric boots and waders. Permanently seals and repairs leaks with a waterproof bond.



### 28500

#### XTRATUF® Bama Sokket

Removable, insulating boot liners combine acrylic fiber with cotton tricot to wick away perspiration and insulate against the cold. Wear one size larger boot when wearing Bama Sokkets.

Whole Sizes: 5-15



## Chemical Resistance Comparison

E – Excellent

G – Good

F – Fair

P – Poor

This **Chemical Resistance Comparison** chart is based on theoretical information available in literature about the chemical resistance of individual elastomers. It is provided as a general guide for qualified professionals who recommend, select, specify or otherwise determine the suitability of products for worker safety. As such, the Chemical Resistance Comparison chart is advisory only and addresses the relative resistance of rubber, neoprene and PVC to degradation by the listed chemicals.

This chart does not address resistance to permeation. Permeation resistance of a particular elastomer cannot be inferred based on the chemical resistance information provided in this chart. The suitability of a product for a specific application must be determined and tested by the purchaser. **Norcross Safety Products L.L.C. assumes no responsibility for the suitability of an end user's product selection for a specific application.**

|                          | Rubber | Neoprene | PVC | TPU |                                    | Rubber | Neoprene | PVC | TPU |                        | Rubber | Neoprene | PVC | TPU |
|--------------------------|--------|----------|-----|-----|------------------------------------|--------|----------|-----|-----|------------------------|--------|----------|-----|-----|
| Acetaldehyde             | F      | F        | P   | E   | Cyclohexanone                      | P      | P        | P   | G   | Methyl Ethyl Ketone    | P      | P        | P   | G   |
| Acetic Acid              | E      | F        | P   | G   | Diacetone Alcohol                  | G      | G        | P   | G   | Milk                   | E      | P        | E   | E   |
| Acetone                  | F      | P        | P   | G   | Dibenzyl Ether                     | P      | P        | P   | F   | Mineral Oil            | P      | E        | E   | E   |
| Acrylonitrile            | F      | P        | G   | G   | Dibutyl Phthalate                  | P      | P        | P   | F   | Monoethanolamine       | G      | G        | G   | P   |
| Ammonia Anhydrous        | E      | E        | P   | G   | Diethylphthalate                   | P      | G        | P   | G   | Morpholine             | P      | P        | F   | G   |
| Ammonium Hydroxide       | G      | E        | G   | G   | Diesel Fuel                        | P      | G        | F   | E   | Naphtha                | P      | P        | F   | G   |
| Ammonium Sulphate        | E      | E        | G   | P   | Diethanolamine                     | G      | G        | G   | E   | Nitric Acid            | F      | P        | P   | G   |
| Amyl Acetate             | F      | P        | P   | E   | Diisobutylene                      | P      | P        | P   | F   | Nitrobenzene           | P      | P        | P   | P   |
| Amyl Alcohol (Fusel Oil) | G      | E        | E   | E   | Ethyl Acetate                      | P      | P        | P   | F   | Octyl Alcohol          | G      | G        | P   | G   |
| Animal Fats              | P      | G        | G   | E   | Ethyl Alcohol                      | E      | E        | G   | E   | Oleic Acid             | P      | F        | G   | G   |
| Aniline                  | F      | P        | P   | P   | Ethylene Glycol                    | E      | E        | E   | E   | Olive Oil              | P      | G        | F   | E   |
| Battery Acid             | P      | F        | G   | E   | Ethyl Ether                        | P      | P        | P   | E   | Paint Remover          | P      | P        | P   | G   |
| Benzaldehyde             | F      | P        | P   | E   | Ethyl Formate                      | P      | G        | F   | F   | Perchloroethylene      | P      | P        | P   | G   |
| Benzene (Benzol)         | P      | P        | P   | G   | Ferric Chloride                    | E      | E        | E   | P   | Perchloric Acid        | P      | G        | P   | P   |
| Benzol (Benzene)         | P      | P        | P   | G   | Formaldehyde                       | G      | G        | G   | G   | Petroleum Oils         | P      | G        | G   | E   |
| Benzyl Alcohol           | P      | G        | E   | F   | Formic Acid                        | G      | E        | G   | G   | Petroleum Solvent      | P      | G        | G   | E   |
| Benzyl Chloride          | P      | P        | P   | P   | Furfural                           | P      | G        | F   | G   | Phosphoric Acid 20%    | F      | F        | F   | G   |
| Butane                   | F      | G        | F   | E   | Fusel Oil (Amyl Alcohol)           | E      | E        | E   | G   | Pine Oil               | P      | P        | F   | G   |
| Butter                   | P      | G        | E   | E   | Gasoline (Cracked)                 | P      | F        | F   | E   | Potassium Dichromate   | G      | E        | G   | E   |
| Buttermilk               | P      | E        | G   | E   | Gasoline (SR)                      | P      | G        | F   | E   | Potassium Hydroxide    | G      | G        | G   | G   |
| Butyraldehyde            | P      | F        | P   | G   | Glycerine                          | E      | E        | E   | E   | Potassium Permanganate | E      | E        | G   | G   |
| Butyl Acetate            | E      | P        | P   | F   | Grease (Petroleum Based)           | P      | F        | E   | E   | Propane                | P      | G        | E   | G   |
| Butyl Alcohol            | E      | E        | G   | E   | Hexane                             | P      | G        | F   | G   | Propyl Acetate         | P      | P        | P   | F   |
| Calcium Chloride         | E      | E        | E   | E   | Hydraulic Fluids (Petroleum Base)  | P      | G        | E   | E   | Propyl Alcohol         | E      | E        | E   | E   |
| Calcium Hypochlorite     | P      | F        | E   | F   | Hydraulic Fluids (Phosphate Ester) | P      | P        | P   | P   | Silicone Oil 220       | G      | E        | G   | E   |
| Carbolic Acid            | P      | P        | F   | P   | Hydraulic Fluids (Silicate Ester)  | P      | E        | P   | F   | Skydrol #500           | P      | P        | P   | F   |
| Carbon Disulfide         | P      | P        | P   | P   | Hydraulic Fluids (Water Glycol)    | G      | F        | P   | G   | Soaps                  | G      | G        | G   | E   |
| Carbon Tetrachloride     | P      | G        | P   | P   | Hydrobromic Acid                   | E      | F        | E   | G   | Sodium Chloride        | E      | E        | G   | G   |
| Carbonic Acid            | E      | E        | E   | E   | Hydrochloric Acid                  | E      | G        | E   | G   | Sodium Hydroxide       | E      | E        | E   | G   |
| Castor Oil               | E      | E        | E   | G   | Hydrofluoric Acid                  | P      | F        | E   | G   | Stearic Acid           | F      | G        | E   | E   |
| Caustic Potash           | G      | E        | G   | G   | Hydrofluoric Acid (Hot)            | P      | P        | G   | F   | Sulfuric Acid          | F      | F        | G   | E   |
| Caustic Soda             | E      | E        | G   | G   | Hydrogen Peroxide                  | F      | P        | G   | G   | Tannic Acid            | E      | E        | E   | G   |
| Chlorine Water           | F      | F        | F   | G   | Hydrogen Sulfide                   | F      | E        | E   | F   | Tide                   | P      | G        | G   | G   |
| Chloroacetone            | F      | F        | P   | G   | Hydrene (Toulene Diisocyanate)     | P      | P        | P   | E   | Tin Chloride           | G      | G        | G   | P   |
| Chloroform               | P      | P        | P   | P   | Isopropyl Alcohol                  | E      | E        | E   | E   | Toluene                | P      | P        | P   | G   |
| Chlorothene              | P      | P        | P   | F   | Kerosene (Coal Tar)                | P      | F        | G   | G   | Toluol                 | P      | P        | P   | G   |
| Chlorox                  | P      | G        | G   | G   | Kerosene (Pet.)                    | P      | P        | P   | F   | Trichloroethylene      | P      | P        | P   | P   |
| Citric Acid              | E      | E        | E   | G   | Lactic Acid                        | G      | E        | G   | E   | Tricresol Phosphate    | F      | F        | P   | P   |
| Coal Tar Solvents        | P      | P        | G   | G   | Lard Oil                           | P      | G        | G   | E   | Triethanolamine        | G      | G        | G   | F   |
| Coconut Oil              | P      | E        | F   | E   | Linseed Oil                        | P      | E        | P   | E   | Trinitrotoluene (TNT)  | P      | G        | G   | F   |
| Copper Chloride          | G      | G        | E   | G   | Malic Acid                         | E      | E        | E   | G   | Tung Oil               | P      | E        | F   | E   |
| Copper Sulphate          | G      | E        | E   | G   | Methyl Acetate                     | P      | F        | P   | G   | Turpentine             | P      | G        | G   | G   |
| Cottonseed Oil           | P      | E        | G   | E   | Methyl Alcohol                     | E      | E        | G   | E   | Water                  | E      | E        | E   | E   |
| Cutting Oil              | P      | G        | P   | G   | Methyl Cellosolve                  | P      | G        | E   | G   | Water 100C             | E      | E        | E   | E   |
| Cyclohexane              | P      | P        | P   | G   | Methyl Chloride                    | P      | P        | P   | G   | Xylol                  | P      | P        | P   | F   |

With NSP Triple Density Technology®, it is possible to mold three compounds in one boot. Normally, two compounds are used to make the parts of the outsole both durable and slip resistant in specific organic or inorganic substances. The third compound is used to mold job-specific boot uppers for use in harsh environments such as slaughterhouses, agri-industrial fertilizers and chemicals, petrochemicals, dairy and poultry processing, commercial fishing and processing, breweries, and other specific applications. Note the recommended job applications for Triple Density Footwear throughout this catalog. In these applications, the footwear ratings will be even better than the ratings for ordinary PVC as shown in this Chemical Resistance Chart.



| Stock No. | Page No. | Sizes             | Case Pairs | Case Weight | Packaging |
|-----------|----------|-------------------|------------|-------------|-----------|
| A111      | 25       | 4-14              | 6          | 35          | Bag       |
| A351      | 18       | 6-15              | 6          | 32          | Bag       |
| A352      | 35       | 5-XXL             | 50         | 30          | Bag       |
| A380      | 17       | 8-16              | 6          | 33          | Bag       |
| A383      | 30       | 5-14              | 6          | 29          | Bag       |
| A417      | 36       | 6-14              | 12         | 6           | Bag       |
| A421      | 34       | 6-15              | 6          | 38          | Bag       |
| A422      | 34       | 7-14              | 6          | 42          | Bag       |
| A465      | 34       | 7-14              | 6          | 25          | Box       |
| A466      | 34       | 7-14              | 6          | 25          | Box       |
| A485      | 34       | 7-14              | 6          | 25          | Bag       |
| A2070     | 25       | 6-14              | 6          | 70          | Box       |
| A2300     | 25       | 4-14              | 6          | 57          | Box       |
| B7914     | 20       | 6-16              | 12         | 34          | Bag       |
| B7916     | 20       | 7-16              | 12         | 34          | Bag       |
| B7924     | 20       | 6-16              | 12         | 24          | Bag       |
| B7926     | 20       | 7-16              | 12         | 24          | Bag       |
| B7993     | 21       | 5-XXL             | 24         | 24          | Bag       |
| B7994     | 21       | 5-XXL             | 24         | 24          | Bag       |
| B7995     | 21       | 5-XXL             | 50         | 24          | Bag       |
| R1141     | 29       | 5-6, 7-12*, 13-14 | 12         | 50          | Bag       |
| R2145     | 13       | 6-14              | 6          | 46          | Bag       |
| R6130     | 32       | 6-13              | 6          | 27          | Bag       |
| SR101     | 23       | S/M-XXL           | 50         | 12          | Bag       |
| SR105     | 22       | S-XXXL            | 6          | 27          | Bag       |
| SR108     | 22       | S-XXXL            | 6          | 27          | Bag       |
| SR110     | 22       | S-XL              | 12         | 37          | Bag       |
| SR111     | 22       | XS-XL             | 12         | 21          | Bag       |
| SR201     | 23, 36   | NA                | Individual | --          | Bag       |
| T111      | 30       | 3-15              | 6          | 30          | Bag       |
| T112      | 25       | 7-15              | 6          | 45          | Bag       |
| T314      | 18       | 8-15              | 12         | 35          | Bag       |
| T315      | 17       | 8-14              | 6          | 35          | Bag       |
| T369      | 17       | 8-16              | 6          | 33          | Bag       |
| T419      | 17       | 8-16              | 6          | 32          | Bag       |
| T469      | 17       | 8-16              | 12         | 45          | Bag       |
| 1142      | 29       | 5-6, 7-12*, 13    | 12         | 47          | Bag       |
| 1152      | 29       | 5-6, 7-12*, 13    | 12         | 53          | Bag       |
| 2141      | 31       | 5-14              | 6          | 35          | Bag       |
| 2142      | 24       | 6-15              | 6          | 46          | Bag       |
| 2143      | 24       | 6-14              | 6          | 51          | Bag       |
| 2144      | 28       | 5-15              | 6          | 35          | Bag       |
| 2149      | 12       | 5-13              | 6          | 35          | Bag       |
| 2155      | 13       | 6-13              | 6          | 37          | Bag       |
| 2165      | 12       | 6-13              | 6          | 37          | Bag       |
| 2169      | 12       | 5-14              | 6          | 38          | Bag       |
| 2221      | 13       | 6-15              | 6          | 50          | Bag       |
| 2222      | 13       | 6-15              | 6          | 48          | Bag       |
| 3950      | 12       | 6-14              | 6          | 38          | Bag       |
| 6131      | 32       | 6-13              | 12         | 50          | Bag       |
| 6141      | 32       | 5-13              | 12         | 50          | Bag       |
| 6145      | 11       | 6-14              | 6          | 35          | Bag       |
| 6147      | 11       | 6-13              | 6          | 28          | Bag       |
| 7361      | 13       | 7-15              | 12         | 37          | Bag       |
| 7362      | 13       | 8-15              | 12         | 47          | Bag       |
| 9810      | 12       | 6-15              | 6          | 44          | Bag       |
| 11001     | 19       | S-XL              | 6          | 36          | Bag       |
| 11003     | 19       | XS-XL             | 12         | 20          | Bag       |
| 11095     | 35       | S-XL              | 6          | 36          | Bag       |
| 11134     | 31       | 6-14              | 6          | 29          | Bulk      |
| 11135     | 24       | 5-14              | 6          | 42          | Bulk      |
| 11146     | 24       | 6-14              | 6          | 52          | Bag       |
| 11190     | 33       | 6-14              | 6          | 35          | Bag       |
| 11426     | 35       | 1-4**             | 4          | 44          | Bag       |
| 11444     | 24       | 6-14              | 6          | 55          | Box       |
| 11490     | 30       | 7-14              | 6          | 40          | Bag       |
| 18801     | 27       | 5-13              | 6          | 30          | Bul       |
| 18802     | 27       | 5-13              | 6          | 26          | Bulk      |
| 18821     | 27       | 3-15              | 6          | 29          | Bag       |
| 18822     | 27       | 3-15              | 6          | 27          | Bag       |
| 20000     | 37       | NA                | Individual | --          | Pack      |
| 21607     | 31       | 6-13              | 6          | 29          | Bag       |

| Stock No. | Page No. | Sizes   | Case Pairs | Case Weight | Packaging |
|-----------|----------|---------|------------|-------------|-----------|
| 21622     | 32       | 4-13    | 6          | 45          | Bag       |
| 21674     | 11       | 6-14    | 6          | 28          | Bag       |
| 22103     | 6        | 6-13    | 12         | 47          | Bag       |
| 22114     | 7        | 3-15    | 6          | 27          | Bag       |
| 22115     | 7        | 4-14    | 6          | 23          | Bag       |
| 22148     | 6        | 6-13    | 6          | 28          | Bag       |
| 22158     | 6        | 6-13    | 6          | 28          | Bag       |
| 22206     | 7        | 5-15    | 6          | 37          | Bag       |
| 22214     | 7        | 3-15    | 6          | 31          | Bag       |
| 22215     | 7        | 3-14    | 6          | 27          | Bag       |
| 22234     | 6        | 3-15    | 6          | 27          | Bag       |
| 22235     | 6        | 3-15    | 6          | 28          | Bag       |
| 22248     | 6        | 6-13    | 6          | 32          | Bag       |
| 22273G    | 8        | 3-15    | 6          | 36          | Box       |
| 22274G    | 8        | 5-14    | 6          | 32          | Box       |
| 23000     | 37       | NA      | Individual | --          | Pack      |
| 25002     | 37       | NA      | Individual | --          | Pack      |
| 27001     | 37       | 3-15    | Individual | 4           | Bag       |
| 27002     | 37       | 3-15    | 120        | 26          | Bag       |
| 28000     | 37       | 5-XXL   | 25         | 24          | Bag       |
| 28114     | 37       | 3-15    | 12         | 2           | Bag       |
| 28500     | 37       | 5-15    | 24         | 18          | Bag       |
| 29000     | 37       | 5-14    | 50         | 29          | Bulk      |
| 31860     | 16       | 6-15    | 12         | 44          | Bulk      |
| 31960     | 16       | 8-15    | 12         | 40          | Bulk      |
| 41463     | 16       | 8-14    | 12         | 29          | Bulk      |
| 41862     | 16       | 6, 8-15 | 12         | 35          | Bulk      |
| 70914     | 20       | 6-16    | 12         | 42          | Box       |
| 70924     | 20       | 4-16    | 12         | 32          | Box       |
| 73104     | 29       | 6-13    | 6          | 25          | Bag       |
| 73505     | 27       | 6-13    | 6          | 30          | Bag       |
| 74928     | 27       | 4-13    | 6          | 26          | Bag       |
| 74930     | 27       | 4-13    | 6          | 29          | Bag       |
| 75101     | 10       | 5-15    | 6          | 31          | Bag       |
| 75102     | 10       | 5-15    | 6          | 29          | Bag       |
| 75105     | 9        | 5-15    | 6          | 31          | Bag       |
| 75108     | 10       | 3-15    | 6          | 29          | Bag       |
| 75109     | 10       | 3-15    | 6          | 31          | Bag       |
| 75145C    | 28       | 7-14    | 6          | 31          | Bag       |
| 75177     | 35       | 7-15    | 6          | 31          | Bag       |
| 76919     | 20       | M-XL    | 12         | 31          | Box       |
| 76993     | 21       | S-XXL   | 24         | 31          | Box       |
| 78590     | 33       | 7-14    | 6          | 46          | Bag       |

## NEOS

|          |    |         |            |    |      |
|----------|----|---------|------------|----|------|
| ANN1     | 14 | XS-XXL  | 12         | 27 | Box  |
| EVA      | 36 | XS-XXL  | Individual | -- | Bag  |
| EXPG     | 15 | S-XXXL  | 6          | 20 | Box  |
| EXSG     | 23 | XS-XXXL | 6          | 20 | Box  |
| IT12PT17 | 4  | XS-XXXL | 12         | 32 | Bag  |
| IT12ST01 | 4  | XS-XXXL | 12         | 32 | Bag  |
| IT12ST17 | 4  | XS-XXXL | 12         | 32 | Bag  |
| IT20PT17 | 4  | XS-XXXL | 12         | 35 | Bag  |
| IT20ST17 | 4  | XS-XXXL | 12         | 35 | Bag  |
| N5P3     | 15 | XS-XXL  | 6          | 20 | Box  |
| N5P3S    | 23 | XS-XXXL | 6          | 20 | Box  |
| NSS      | 36 | S-L     | Individual | -- | Bag  |
| RTK8     | 14 | M-XXL   | 6          | 35 | Box  |
| RTK15    | 14 | M-XXL   | 6          | 35 | Box  |
| SRC      | 36 | NA      | Individual | -- | Pack |
| TRS7     | 14 | XS-XXL  | 12         | 24 | Box  |
| VIS1     | 14 | XS-XXL  | 12         | 20 | Box  |
| VITVL2   | 36 | XS-XXL  | Individual | -- | Bag  |
| VNN1     | 14 | XS-XXXL | 12         | 24 | Box  |
| VNS1     | 23 | XS-XXXL | 12         | 29 | Box  |

## The Original Muck Boot Company\*

|          |    |      |    |    |     |
|----------|----|------|----|----|-----|
| CHH-000A | 26 | 5-16 | 4  | 26 | Box |
| CHM-000A | 26 | 5-16 | 4  | 24 | Box |
| CHS-000A | 26 | 5-14 | 4  | 29 | Box |
| EWG-333T | 26 | 4-14 | 12 | 45 | Box |
| JOB-000A | 26 | 4-14 | 4  | 17 | Box |

All NSP Protective Footwear is designed for proportional fit and comfort. Only median heights and weights are provided in this catalog for your convenience. Heights and weights will necessarily vary slightly by size.

\* Available in half sizes.

\*\* See sizing conversion chart.

AQUASEAL® Registered trademark of McNett Corporation  
 NORTH® Registered trademark of North Safety Products Inc.  
 THERMOLITE® Registered trademark of Dupont Corporation  
 Breathe-O-Prene® Registered trademark of ACCU-MED Technologies, Inc.  
 THINSULATE™ Trademark of 3M Co.  
 STABILICERS® Registered trademark of 32 North



[www.northsafety.com](http://www.northsafety.com)

**HEAD PROTECTION**

**EYE & FACE PROTECTION**

**HEARING PROTECTION**

**RESPIRATORY PROTECTION**

**WELDING PRODUCTS**

**FALL PROTECTION**

**FIRST AID PRODUCTS**

**GOVERNMENT**

**HAND PROTECTION**

**PROTECTIVE CLOTHING**

**PROTECTIVE FOOTWEAR**

**TRAFFIC SAFETY PRODUCTS**

**SIGNS and LOCKOUTS**

To order protective footwear from this catalog call:

**USA**

**ROCK ISLAND**

1-800-777-9021

Tel: (309) 786-7741

Fax: (309) 786-6923

Toll Free Fax: 1-800-267-6809

Norcross Safety Products

1136 2nd Street

Rock Island, IL 61201

To order all other products call:

**USA**

Email: [marketing@northsafety.com](mailto:marketing@northsafety.com)

**CRANSTON**

1-800-430-4110

Tel: (401) 943-4400

Fax: (401) 275-2618

Toll Free Fax: 1-800-572-6346

North Safety Products

2000 Plainfield Pike

Cranston, RI 02921

Outside the USA contact the location serving your country.

**CANADA**

Email: [marketing@northsafety.ca](mailto:marketing@northsafety.ca)

**EASTERN & ATLANTIC**

**CANADA**

1-888-212-SAFE (7233)

**CENTRAL CANADA**

1-888-316-SAFE (7233)

Toll Free Fax: 1-888-NORTH SP  
(667-8477)

**WESTERN CANADA**

1-800-661-3638

**MONTREAL**

10550 Parkway Blvd.

Anjou, Quebec

H1J 2K4

Tel: (514) 351-SAFE (7233)

Fax: (514) 355-SAFE (7233)

**TORONTO**

Sales Support

26 Dansk Court

Toronto, Ontario

M9W 5V8

Tel: (416) 675-2810

Fax: (416) 675-6898

Toll Free Phone: 1-866-272-2733

Toll Free Fax: 1-866-640-9415

**EDMONTON**

6303 Roper Road

Edmonton, Alberta

T6B 3G6

Tel: (780) 437-2641

Fax: (780) 436-0048

**EUROPE & MIDDLE EAST**

Email: [marketing@northsafety.nl](mailto:marketing@northsafety.nl)

**THE NETHERLANDS**

Anodeweg 1

4338 RA Middelburg

The Netherlands

Tel: +31(0)118 656400

Fax: +31(0)118 627535

**UNITED KINGDOM**

Tel: +44(0)170 669 3800

Fax: +44(0)170 669 3801

**GERMANY**

Tel: +49(0) 40611775-0

Fax: +49(0) 40611775-10

**SCANDINAVIA**

Tel: +46(0)36377241

Fax: +46(0)36377629

**FRANCE**

Tel: +33(0) 442 240264

Fax: +33(0) 442 609530

**CHINA**

Email: [marketing@northsafety.cn](mailto:marketing@northsafety.cn)

Tel: 86-10-67892289/90/91

Fax: 86-10-67892292

**ASIA & PACIFIC**

Email: [marketing@northsafety.com](mailto:marketing@northsafety.com)

Tel: 61-3-9337-9111

Fax: 61-3-9337-2808

**LATIN AMERICA**

Email: [marketing@northsafety.ca](mailto:marketing@northsafety.ca)

Tel: (954) 322-1691

Tel: (514) 351-7233

Fax: (514) 351-2645

**MEXICO**

Tel: 011-52 (55) 3538-7366

Tel: 011-52 (55) 5414-6418



A North Safety Products Brand